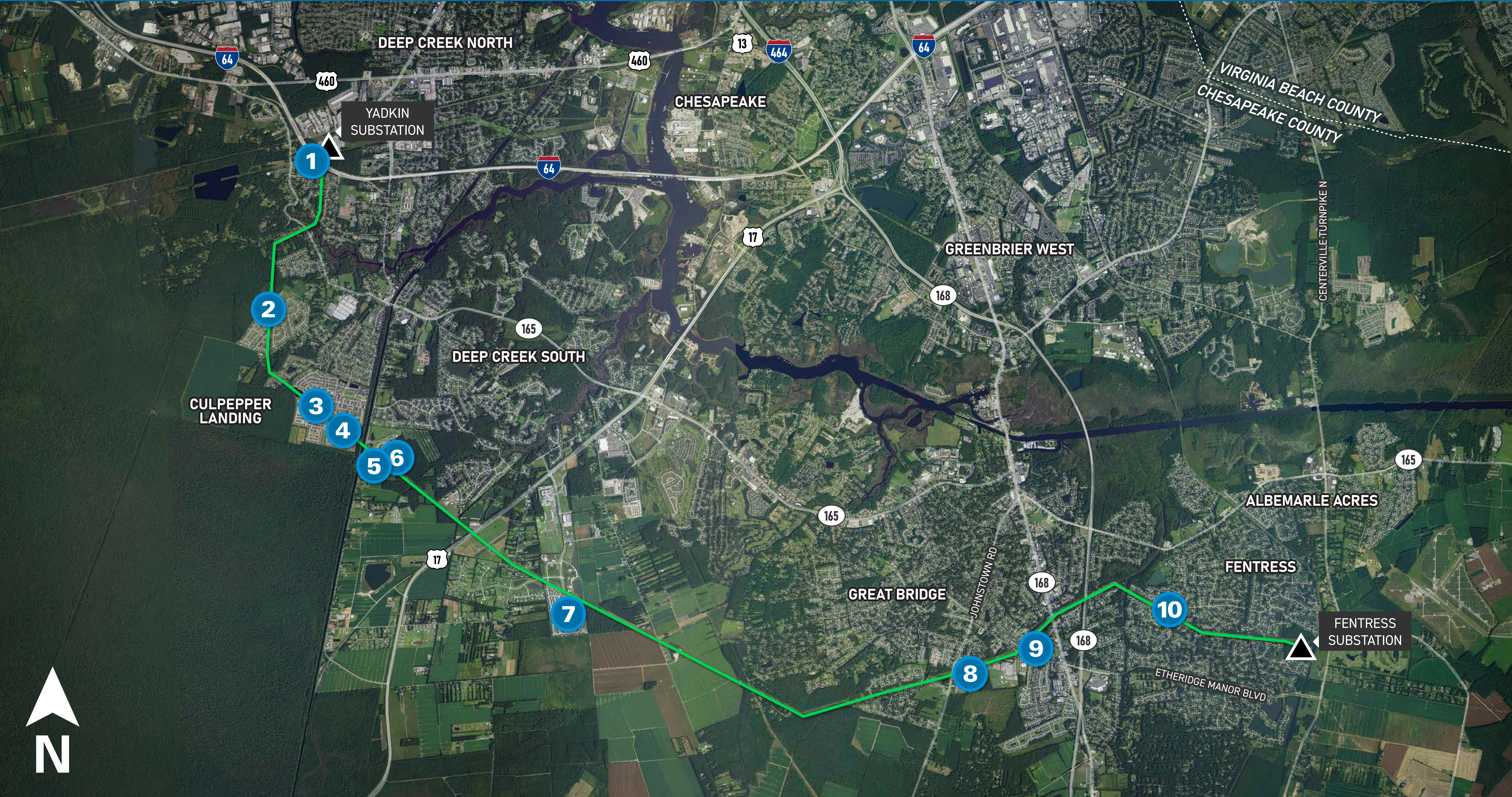


# YADKIN TO FENTRESS

Transmission Line Project

## Photo Location Map

1 Viewpoint Location    — Transmission Line    ▲ Existing Substation





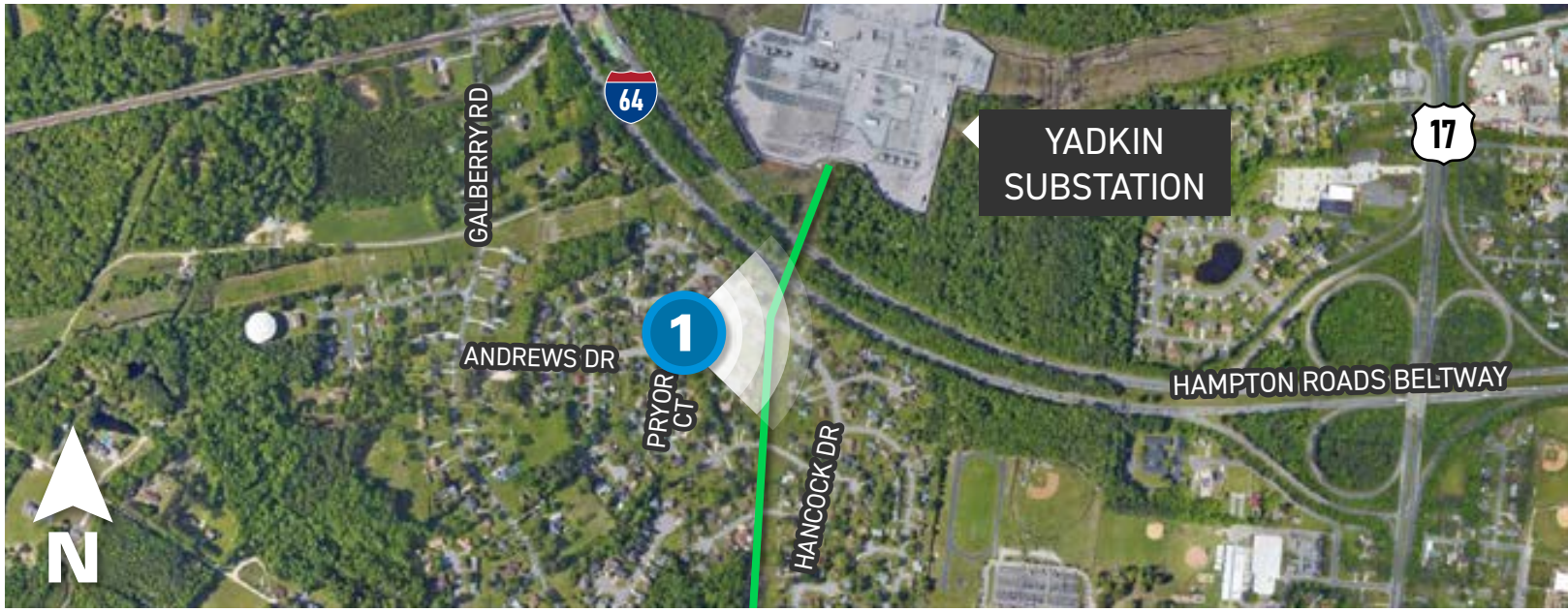
# YADKIN TO FENTRESS

Transmission Line Project

## Viewpoint 1

Date: 6/29/2023 Time: 4:55 pm Viewing Direction: East

1 Viewpoint Location    Transmission Line



EXISTING CONDITIONS



PROPOSED CONDITIONS    Corten

Photo simulations are for discussion purposes only. Final design is subject to change pending public, engineering, and regulatory review.



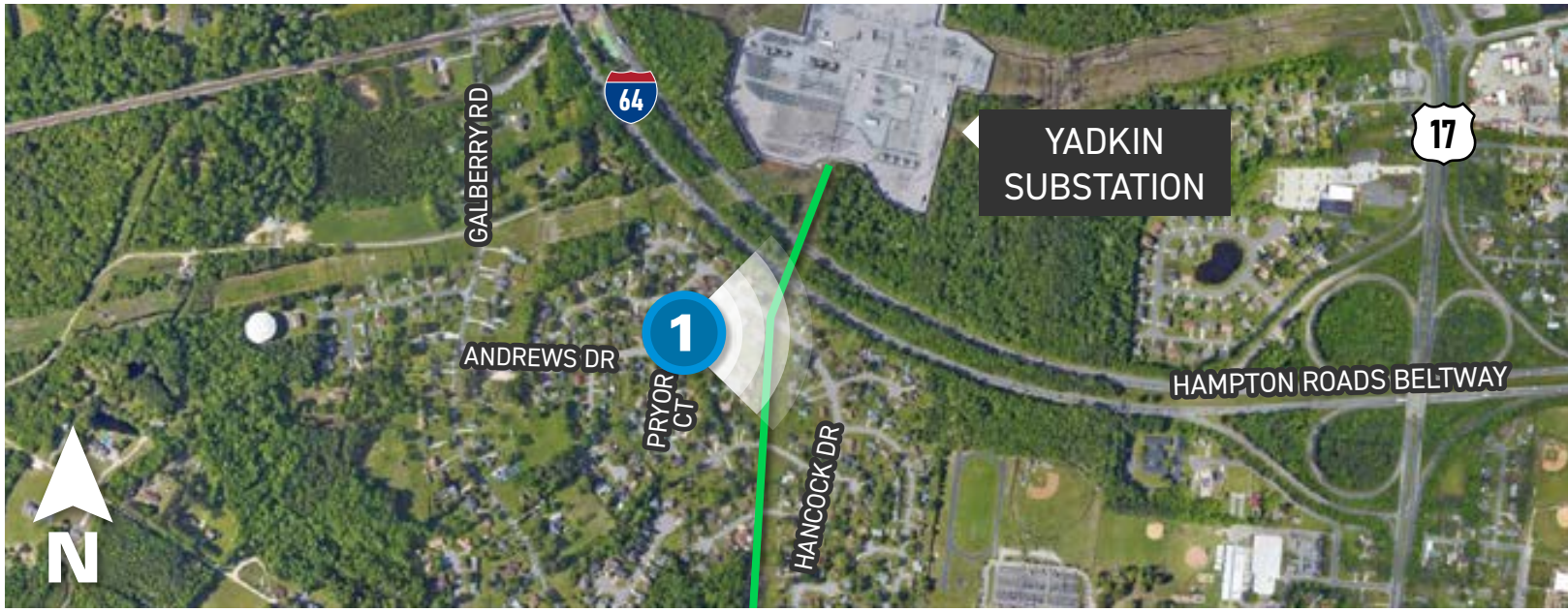
# YADKIN TO FENTRESS

Transmission Line Project

## Viewpoint 1

Date: 6/29/2023 Time: 4:55 pm Viewing Direction: East

1 Viewpoint Location    Transmission Line



EXISTING CONDITIONS



PROPOSED CONDITIONS    Pre-Dulled Galvanized Steel

Photo simulations are for discussion purposes only. Final design is subject to change pending public, engineering, and regulatory review.



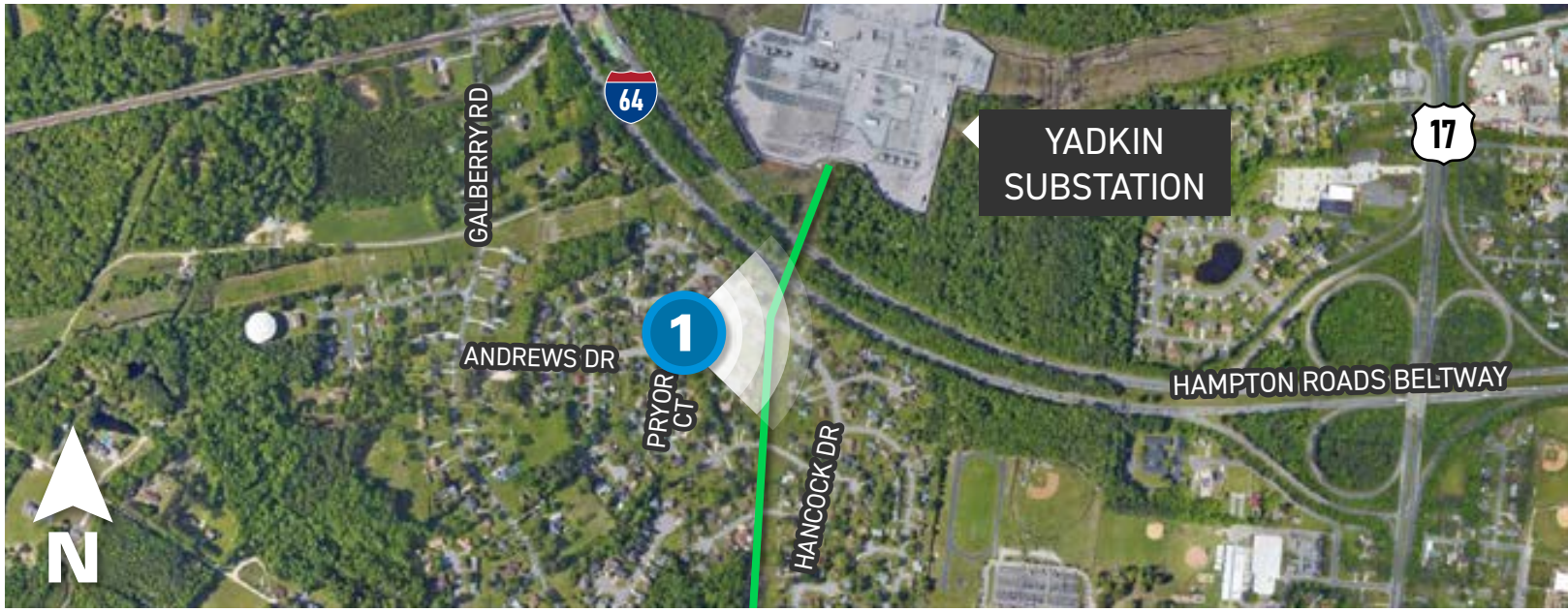
# YADKIN TO FENTRESS

Transmission Line Project

## Viewpoint 1

Date: 6/29/2023 Time: 4:55 pm Viewing Direction: East

1 Viewpoint Location    Transmission Line



EXISTING CONDITIONS



PROPOSED CONDITIONS    Galvanized Steel

Photo simulations are for discussion purposes only. Final design is subject to change pending public, engineering, and regulatory review.



# YADKIN TO FENTRESS

Transmission Line Project

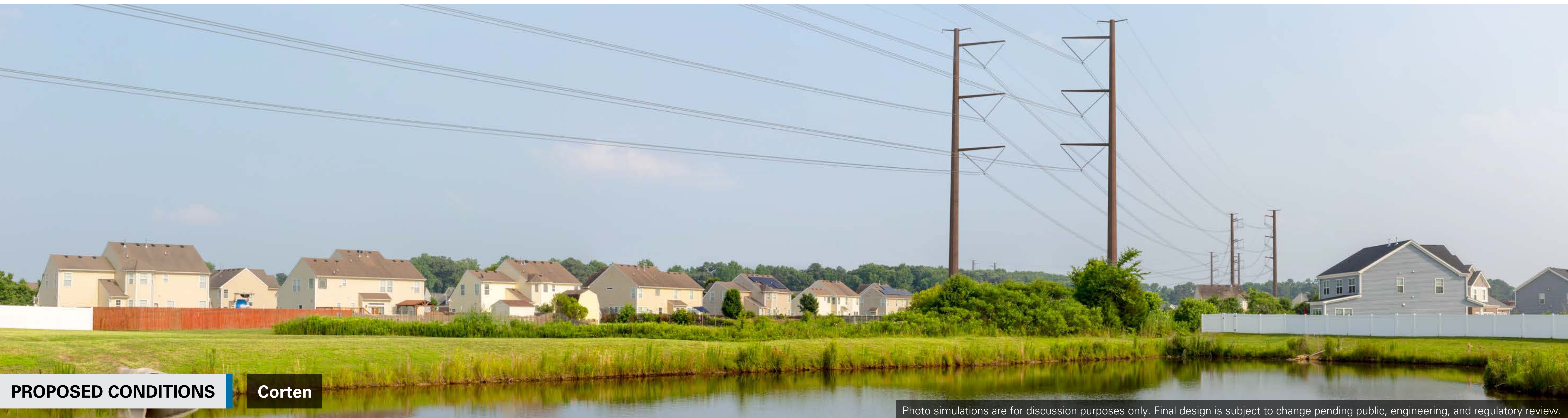
## Viewpoint 2

Date: 6/29/2023 Time: 4:34 pm Viewing Direction: Southeast

2 Viewpoint Location    Transmission Line



EXISTING CONDITIONS



PROPOSED CONDITIONS    Corten

Photo simulations are for discussion purposes only. Final design is subject to change pending public, engineering, and regulatory review.



# YADKIN TO FENTRESS

Transmission Line Project

## Viewpoint 2

Date: 6/29/2023 Time: 4:34 pm Viewing Direction: Southeast

2 Viewpoint Location    Transmission Line



EXISTING CONDITIONS



PROPOSED CONDITIONS    Pre-Dulled Galvanized Steel

Photo simulations are for discussion purposes only. Final design is subject to change pending public, engineering, and regulatory review.



# YADKIN TO FENTRESS

Transmission Line Project

## Viewpoint 2

Date: 6/29/2023 Time: 4:34 pm Viewing Direction: Southeast

2 Viewpoint Location    Transmission Line



EXISTING CONDITIONS



PROPOSED CONDITIONS    Galvanized Steel

Photo simulations are for discussion purposes only. Final design is subject to change pending public, engineering, and regulatory review.



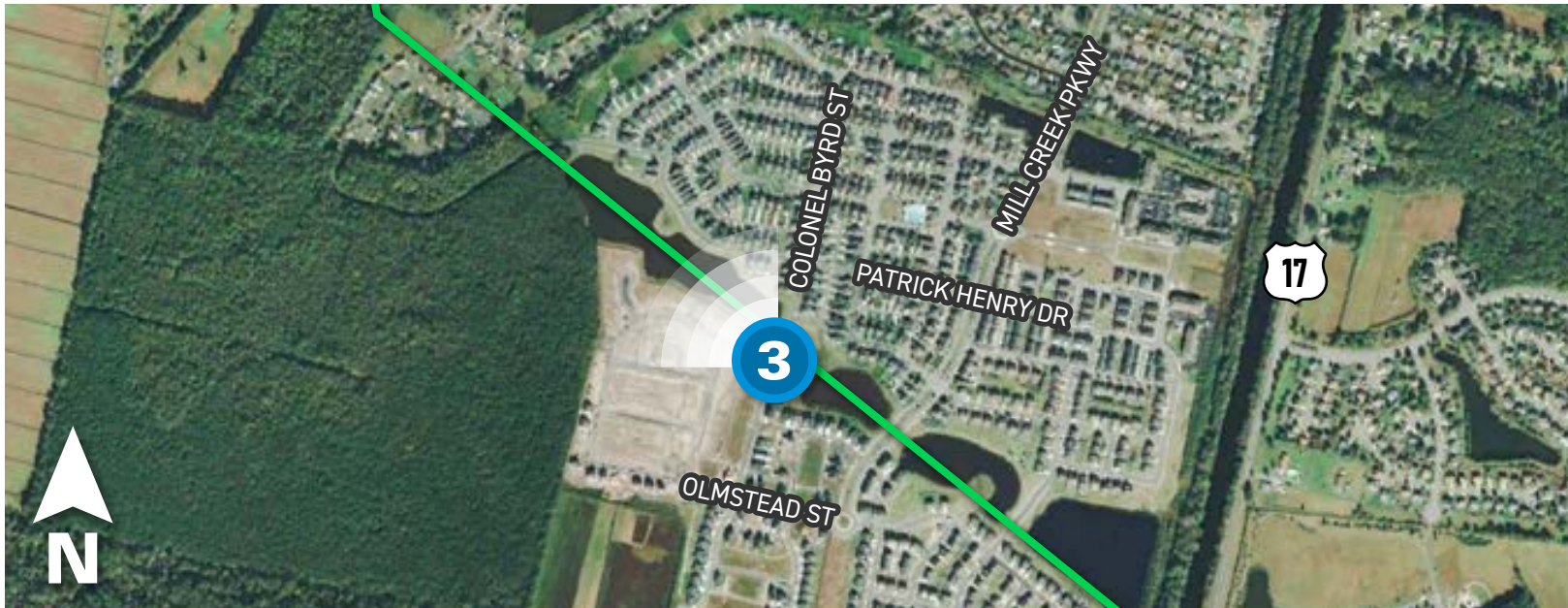
# YADKIN TO FENTRESS

Transmission Line Project

## Viewpoint 3

Date: 6/29/2023 Time: 4:15 pm Viewing Direction: Northwest

3 Viewpoint Location    Transmission Line



EXISTING CONDITIONS



PROPOSED CONDITIONS

Corten

Photo simulations are for discussion purposes only. Final design is subject to change pending public, engineering, and regulatory review.



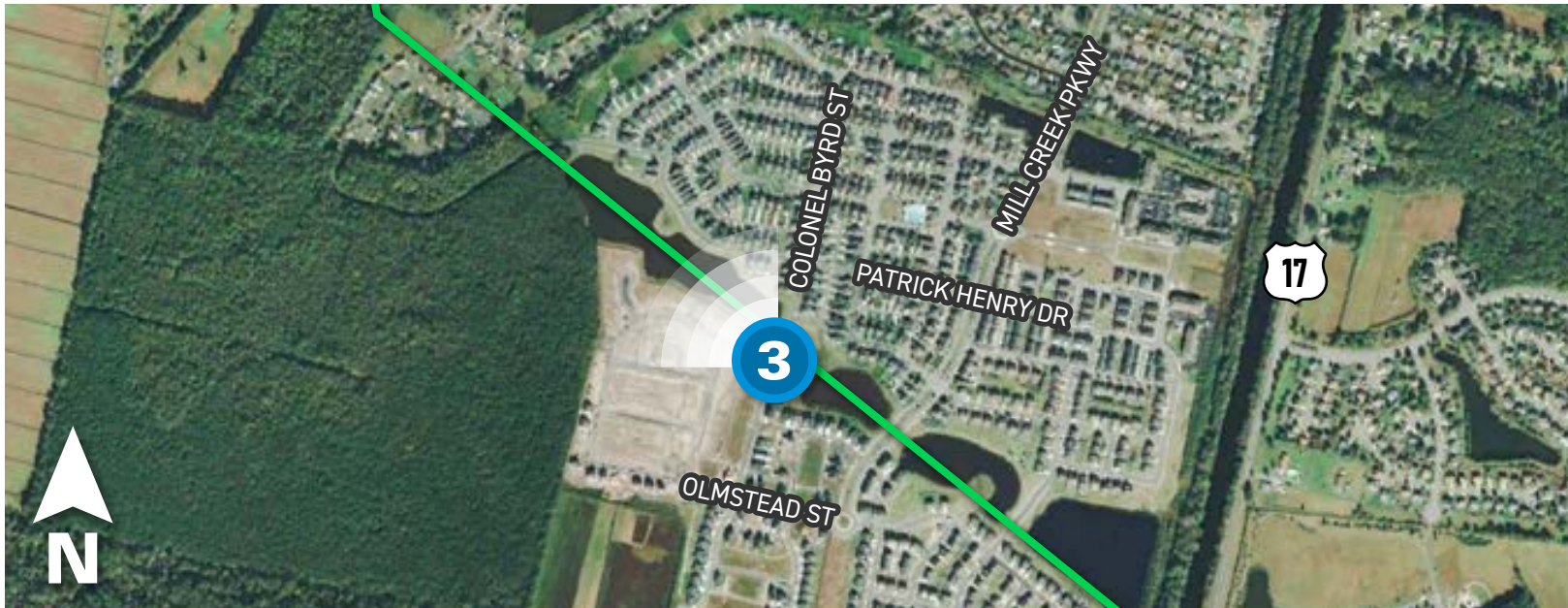
# YADKIN TO FENTRESS

Transmission Line Project

## Viewpoint 3

Date: 6/29/2023 Time: 4:15 pm Viewing Direction: Northwest

3 Viewpoint Location    Transmission Line



EXISTING CONDITIONS



PROPOSED CONDITIONS

Pre-Dulled Galvanized Steel

Photo simulations are for discussion purposes only. Final design is subject to change pending public, engineering, and regulatory review.



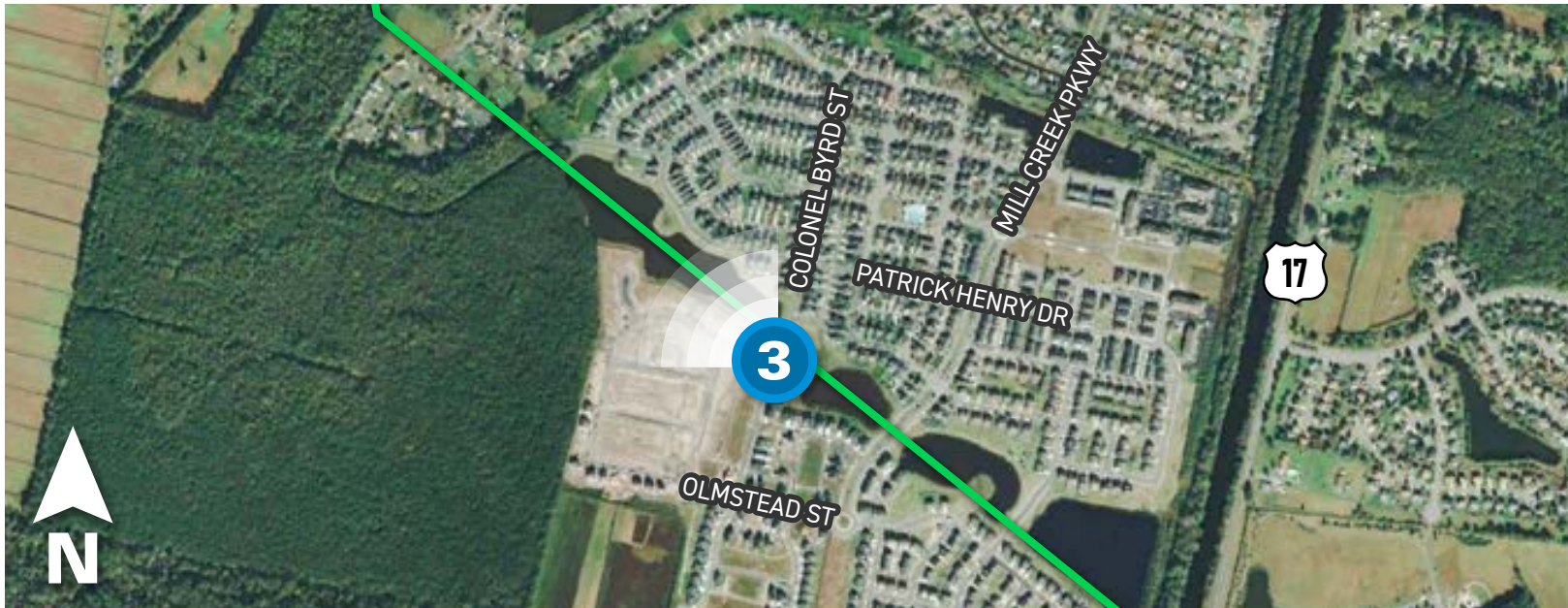
# YADKIN TO FENTRESS

Transmission Line Project

## Viewpoint 3

Date: 6/29/2023 Time: 4:15 pm Viewing Direction: Northwest

3 Viewpoint Location    Transmission Line



EXISTING CONDITIONS



PROPOSED CONDITIONS    Galvanized Steel

Photo simulations are for discussion purposes only. Final design is subject to change pending public, engineering, and regulatory review.



# YADKIN TO FENTRESS

Transmission Line Project

## Viewpoint 4

Date: 6/29/2023 Time: 4:02 pm Viewing Direction: Southeast

4 Viewpoint Location    Transmission Line



EXISTING CONDITIONS



PROPOSED CONDITIONS

Corten

Photo simulations are for discussion purposes only. Final design is subject to change pending public, engineering, and regulatory review.



# YADKIN TO FENTRESS

Transmission Line Project

**Viewpoint 4**  
Date: 6/29/2023 Time: 4:02 pm Viewing Direction: Southeast  
4 Viewpoint Location Transmission Line



EXISTING CONDITIONS



PROPOSED CONDITIONS

Pre-Dulled Galvanized Steel

Photo simulations are for discussion purposes only. Final design is subject to change pending public, engineering, and regulatory review.



# YADKIN TO FENTRESS

Transmission Line Project

**Viewpoint 4**  
Date: 6/29/2023 Time: 4:02 pm Viewing Direction: Southeast  
4 Viewpoint Location Transmission Line



EXISTING CONDITIONS



PROPOSED CONDITIONS

Galvanized Steel

Photo simulations are for discussion purposes only. Final design is subject to change pending public, engineering, and regulatory review.



# YADKIN TO FENTRESS

Transmission Line Project

## Viewpoint 5

Date: 6/29/2023 Time: 10:13 am Viewing Direction: Northwest

5 Viewpoint Location    Transmission Line



EXISTING CONDITIONS



PROPOSED CONDITIONS

Corten

Photo simulations are for discussion purposes only. Final design is subject to change pending public, engineering, and regulatory review.



# YADKIN TO FENTRESS

Transmission Line Project

**Viewpoint 5**  
Date: 6/29/2023 Time: 10:13 am Viewing Direction: Northwest  
5 Viewpoint Location — Transmission Line



EXISTING CONDITIONS



PROPOSED CONDITIONS

Pre-Dulled Galvanized Steel

Photo simulations are for discussion purposes only. Final design is subject to change pending public, engineering, and regulatory review.



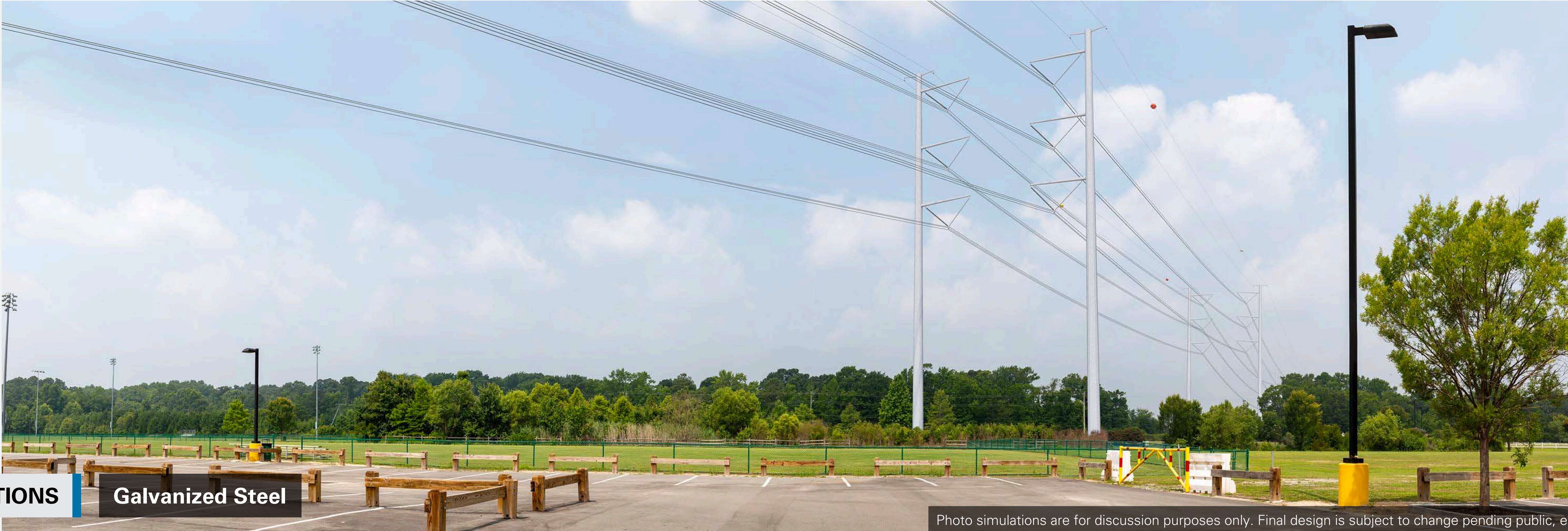
# YADKIN TO FENTRESS

Transmission Line Project

**Viewpoint 5**  
Date: 6/29/2023 Time: 10:13 am Viewing Direction: Northwest  
5 Viewpoint Location    Transmission Line



EXISTING CONDITIONS



PROPOSED CONDITIONS

Galvanized Steel

Photo simulations are for discussion purposes only. Final design is subject to change pending public, engineering, and regulatory review.



# YADKIN TO FENTRESS

Transmission Line Project

## Viewpoint 6

Date: 6/29/2023 Time: 10:13 am Viewing Direction: Southeast

6 Viewpoint Location    Transmission Line



EXISTING CONDITIONS



PROPOSED CONDITIONS

Corten

Photo simulations are for discussion purposes only. Final design is subject to change pending public, engineering, and regulatory review.



# YADKIN TO FENTRESS

Transmission Line Project

## Viewpoint 6

Date: 6/29/2023 Time: 10:13 am Viewing Direction: Southeast

6 Viewpoint Location    Transmission Line



EXISTING CONDITIONS



PROPOSED CONDITIONS    Pre-Dulled Galvanized Steel

Photo simulations are for discussion purposes only. Final design is subject to change pending public, engineering, and regulatory review.



# YADKIN TO FENTRESS

Transmission Line Project

## Viewpoint 6

Date: 6/29/2023 Time: 10:13 am Viewing Direction: Southeast

6 Viewpoint Location    Transmission Line



EXISTING CONDITIONS



PROPOSED CONDITIONS    Galvanized Steel

Photo simulations are for discussion purposes only. Final design is subject to change pending public, engineering, and regulatory review.



# YADKIN TO FENTRESS

Transmission Line Project

**Viewpoint 7**  
**Date:** 6/29/2023 **Time:** 12:17 pm **Viewing Direction:** North  
7 Viewpoint Location    Transmission Line



EXISTING CONDITIONS



PROPOSED CONDITIONS    Corten

Photo simulations are for discussion purposes only. Final design is subject to change pending public, engineering, and regulatory review.



# YADKIN TO FENTRESS

Transmission Line Project

**Viewpoint 7**  
Date: 6/29/2023 Time: 12:17 pm Viewing Direction: North  
7 Viewpoint Location    Transmission Line



EXISTING CONDITIONS



PROPOSED CONDITIONS

Pre-Dulled Galvanized Steel

Photo simulations are for discussion purposes only. Final design is subject to change pending public, engineering, and regulatory review.



# YADKIN TO FENTRESS

Transmission Line Project

**Viewpoint 7**  
Date: 6/29/2023 Time: 12:17 pm Viewing Direction: North  
7 Viewpoint Location    Transmission Line



EXISTING CONDITIONS



PROPOSED CONDITIONS    Galvanized Steel

Photo simulations are for discussion purposes only. Final design is subject to change pending public, engineering, and regulatory review.



# YADKIN TO FENTRESS

Transmission Line Project

## Viewpoint 8

Date: 6/29/2023 Time: 2:10 pm Viewing Direction: North

8 Viewpoint Location    Transmission Line



EXISTING CONDITIONS



PROPOSED CONDITIONS

Corten

Photo simulations are for discussion purposes only. Final design is subject to change pending public, engineering, and regulatory review.



# YADKIN TO FENTRESS

Transmission Line Project

## Viewpoint 8

Date: 6/29/2023 Time: 2:10 pm Viewing Direction: North

8 Viewpoint Location    Transmission Line



EXISTING CONDITIONS



PROPOSED CONDITIONS    Pre-Dulled Galvanized Steel

Photo simulations are for discussion purposes only. Final design is subject to change pending public, engineering, and regulatory review.



# YADKIN TO FENTRESS

Transmission Line Project

**Viewpoint 8**  
Date: 6/29/2023 Time: 2:10 pm Viewing Direction: North  
8 Viewpoint Location Transmission Line



EXISTING CONDITIONS



PROPOSED CONDITIONS Galvanized Steel

Photo simulations are for discussion purposes only. Final design is subject to change pending public, engineering, and regulatory review.



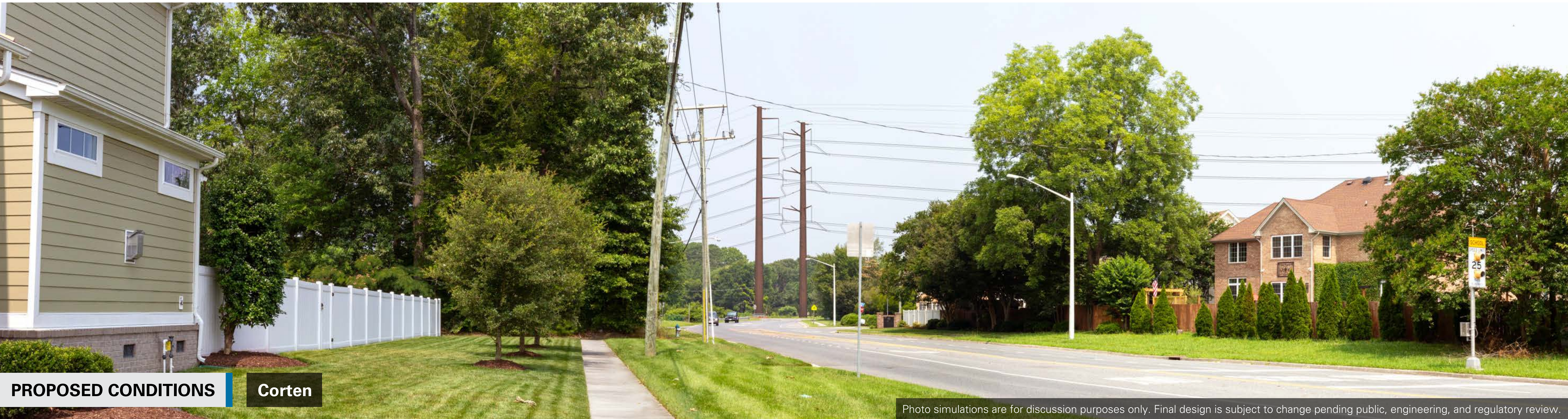
# YADKIN TO FENTRESS

Transmission Line Project

**Viewpoint 9**  
Date: 6/30/2023 Time: 10:14 am Viewing Direction: Northwest  
9 Viewpoint Location    Transmission Line



EXISTING CONDITIONS



PROPOSED CONDITIONS

Corten

Photo simulations are for discussion purposes only. Final design is subject to change pending public, engineering, and regulatory review.



# YADKIN TO FENTRESS

Transmission Line Project

**Viewpoint 9**  
Date: 6/30/2023 Time: 10:14 am Viewing Direction: Northwest  
9 Viewpoint Location — Transmission Line



EXISTING CONDITIONS



PROPOSED CONDITIONS

Pre-Dulled Galvanized Steel

Photo simulations are for discussion purposes only. Final design is subject to change pending public, engineering, and regulatory review.



# YADKIN TO FENTRESS

Transmission Line Project

**Viewpoint 9**  
Date: 6/30/2023 Time: 10:14 am Viewing Direction: Northwest  
9 Viewpoint Location — Transmission Line



EXISTING CONDITIONS



PROPOSED CONDITIONS

Galvanized Steel

Photo simulations are for discussion purposes only. Final design is subject to change pending public, engineering, and regulatory review.



# YADKIN TO FENTRESS

Transmission Line Project

## Viewpoint 10

Date: 6/30/2023 Time: 9:05 am Viewing Direction: Southeast

10 Viewpoint Location    Transmission Line



EXISTING CONDITIONS



PROPOSED CONDITIONS

Corten

Photo simulations are for discussion purposes only. Final design is subject to change pending public, engineering, and regulatory review.



# YADKIN TO FENTRESS

Transmission Line Project

## Viewpoint 10

Date: 6/30/2023 Time: 9:05 am Viewing Direction: Southeast

10 Viewpoint Location    Transmission Line



EXISTING CONDITIONS



PROPOSED CONDITIONS

Pre-Dulled Galvanized Steel

Photo simulations are for discussion purposes only. Final design is subject to change pending public, engineering, and regulatory review.



# YADKIN TO FENTRESS

Transmission Line Project

## Viewpoint 10

Date: 6/30/2023 Time: 9:05 am Viewing Direction: Southeast

10 Viewpoint Location    Transmission Line



EXISTING CONDITIONS



PROPOSED CONDITIONS    Galvanized Steel

Photo simulations are for discussion purposes only. Final design is subject to change pending public, engineering, and regulatory review.