

# Route Overview Map- Page 1

## Western Chesterfield 230 kV Electric Transmission Improvement Project



<b>Overhead Route Alternatives (160' ROW)</b> <ul style="list-style-type: none"><li>Route 1A</li><li>Route 1B</li><li>Route 2A</li><li>Route 2B</li><li>Route 3</li></ul>	<b>Dominion Infrastructure</b> <ul style="list-style-type: none"><li>Existing Substation</li><li>Proposed Substation</li><li>Existing Dominion Transmission Line</li></ul> <b>Cemeteries, Schools, Places of Worship</b> <ul style="list-style-type: none"><li>Places of Worship</li><li>Historic Cemetery</li><li>School</li></ul>	<b>Utility Data</b> <ul style="list-style-type: none"><li>Existing 16" Colonial Pipeline</li></ul> <b>Transportation</b> <ul style="list-style-type: none"><li>Railroad</li><li>Planned Principal Arterial Roadway per Chesterfield County Thoroughfare Plan</li><li>Planned Major Arterial/Collector Road</li></ul> <b>Natural Resources</b> <ul style="list-style-type: none"><li>NHD Streams</li><li>FEMA Floodplains</li></ul>	<b>Planned Developments</b> <ul style="list-style-type: none"><li>Commercial</li><li>Community Resource</li><li>Utility/Renewable Energy</li><li>Residential</li></ul> <b>Easements and Public Lands</b> <ul style="list-style-type: none"><li>North American Land Trust Easement</li><li>Irvin G. Horner Park (Chesterfield County)</li></ul>
---	---	--	--



# Route Overview Map- Page 2

## Western Chesterfield 230 kV Electric Transmission Improvement Project



**Overhead Route Alternatives (160' ROW)**

- Route 1A
- Route 1B
- Route 2A
- Route 2B
- Route 3

**Mount Hermon Variations (160' ROW)**

- Mount Hermon Variation Route 1
- Mount Hermon Variation Route 2
- Mount Hermon Variation Route 3

**Dominion Infrastructure**

- Existing Substation
- Proposed Substation
- Existing Dominion Transmission Line

**Cemeteries, Schools, Places of Worship**

- Places of Worship
- Historic Cemetery
- School

**Utility Data**

- Existing 16" Colonial Pipeline

**Transportation**

- Railroad
- Planned Principal Arterial Roadway per Chesterfield County Thoroughfare Plan
- Planned Major Arterial/Collector Road

**Natural Resources**

- NHD Streams
- FEMA Floodplains

**Planned Developments**

- Utility/Renewable Energy
- Residential

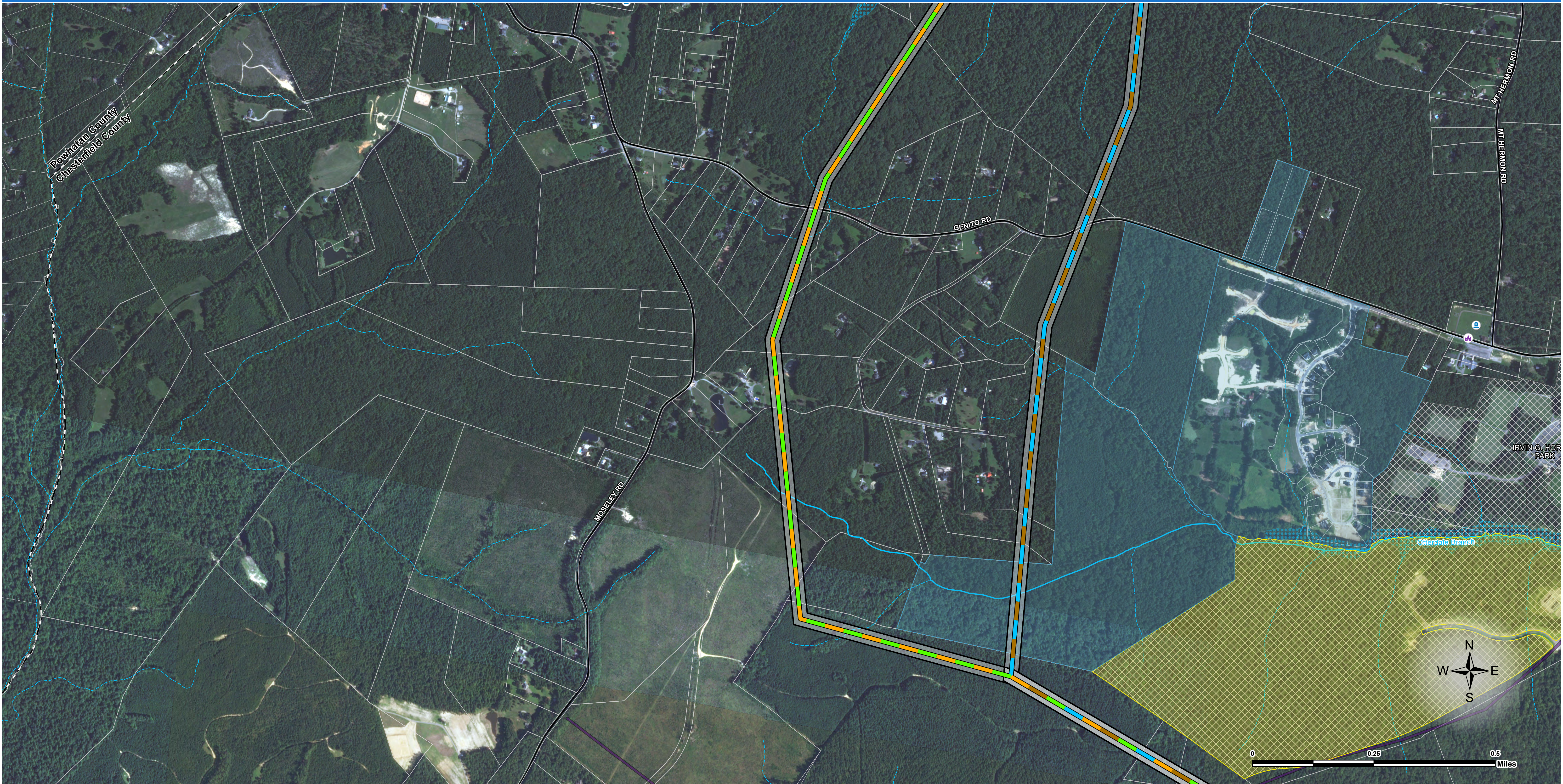
**Easements and Public Lands**

- North American Land Trust Easement
- Irvin G. Horner Park (Chesterfield County)



# Route Overview Map- Page 3

Western Chesterfield 230 kV Electric Transmission Improvement Project



**Overhead Route Alternatives (160' ROW)**

- Route 1A
- Route 1B
- Route 2A
- Route 2B
- Route 3

**Mount Hermon Variations (160' ROW)**

- Mount Hermon Variation Route 1
- Mount Hermon Variation Route 2
- Mount Hermon Variation Route 3

**Dominion Infrastructure**

- Existing Substation
- Proposed Substation
- Existing Dominion Transmission Line

**Cemeteries, Schools, Places of Worship**

- Places of Worship
- Historic Cemetery
- School

**Utility Data**

- Existing 16" Colonial Pipeline

**Transportation**

- Railroad
- Planned Principal Arterial Roadway per Chesterfield County Thoroughfare Plan
- Planned Major Arterial/Collector Road

**Natural Resources**

- NHD Streams
- FEMA Floodplains

**Planned Developments**

- Community Resource
- Residential

**Easements and Public Lands**

- Irvin G. Horner Park (Chesterfield County)



# Route Overview Map- Page 4

Western Chesterfield 230 kV Electric Transmission Improvement Project



**Overhead Route Alternatives (160' ROW)**

- Route 1A
- Route 1B
- Route 2A
- Route 2B
- Route 3

**Mount Hermon Variations (160' ROW)**

- Mount Hermon Variation Route 1
- Mount Hermon Variation Route 2
- Mount Hermon Variation Route 3

**Dominion Infrastructure**

- Existing Substation
- Proposed Substation
- Existing Dominion Transmission Line

**Cemeteries, Schools, Places of Worship**

- Places of Worship
- Historic Cemetery
- School

**Utility Data**

- Existing 16" Colonial Pipeline

**Transportation**

- Railroad
- Planned Principal Arterial Roadway per Chesterfield County Thoroughfare Plan
- Planned Major Arterial/Collector Road

**Natural Resources**

- NHD Streams
- FEMA Floodplains

**Planned Developments**

- Community Resource
- Utility/Renewable Energy
- Residential

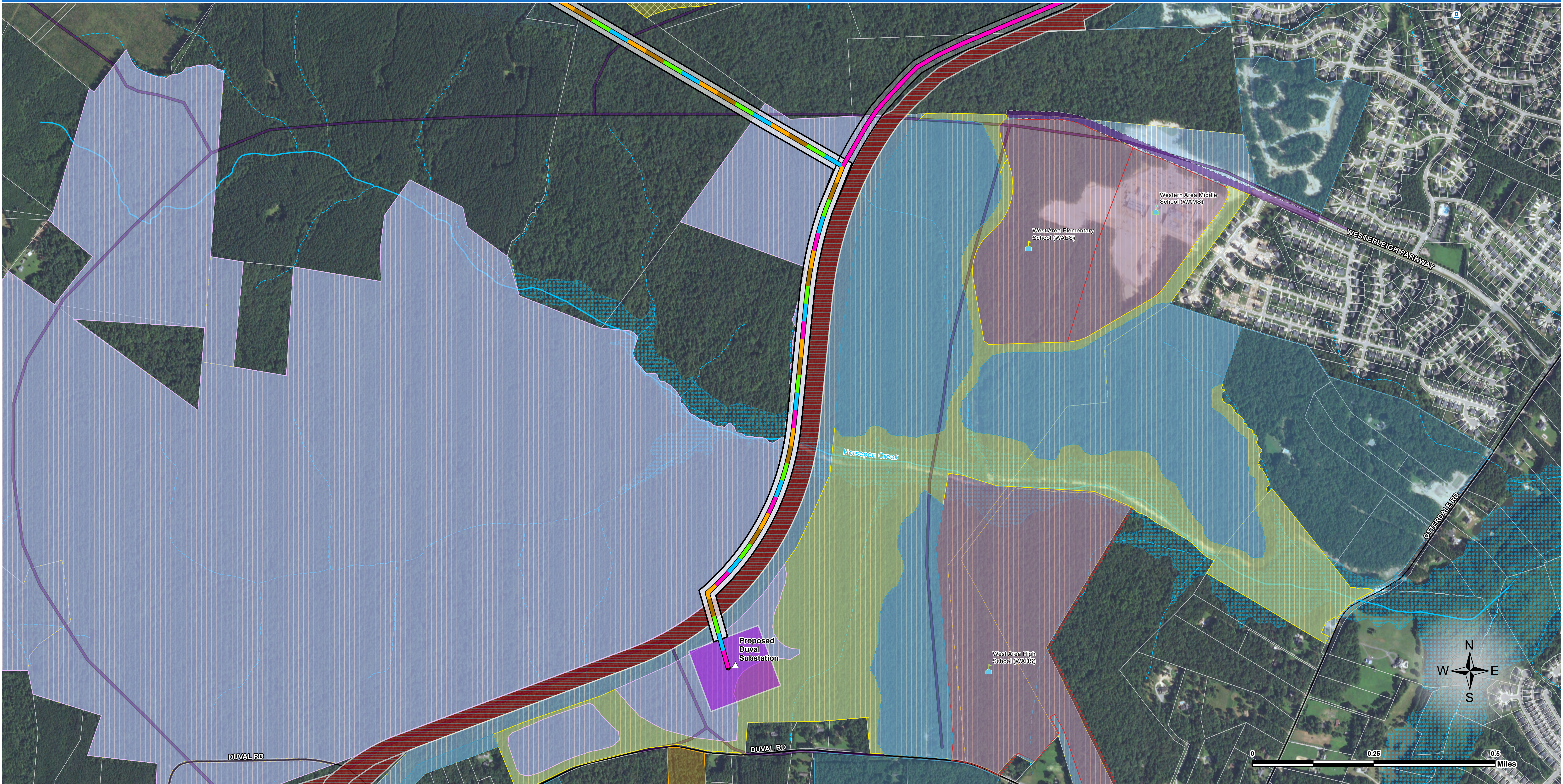
**Easements and Public Lands**

- Irvin G. Horner Park (Chesterfield County)



# Route Overview Map- Page 5

## Western Chesterfield 230 kV Electric Transmission Improvement Project



<b>Overhead Route Alternatives (160' ROW)</b> <ul style="list-style-type: none"><li>Route 1A</li><li>Route 1B</li><li>Route 2A</li><li>Route 2B</li><li>Route 3</li></ul>	<b>Dominion Infrastructure</b> <ul style="list-style-type: none"><li>Existing Substation</li><li>Proposed Substation</li><li>Existing Dominion Transmission Line</li></ul> <b>Cemeteries, Schools, Places of Worship</b> <ul style="list-style-type: none"><li>Places of Worship</li><li>Historic Cemetery</li><li>School</li><li>Proposed School</li></ul>	<b>Utility Data</b> <ul style="list-style-type: none"><li>Existing 16" Colonial Pipeline</li></ul> <b>Transportation</b> <ul style="list-style-type: none"><li>Railroad</li><li>Planned Principal Arterial Roadway per Chesterfield County Thoroughfare Plan</li><li>Planned Major Arterial/Collector Road</li></ul> <b>Natural Resources</b> <ul style="list-style-type: none"><li>NHD Streams</li><li>FEMA Floodplains</li></ul>	<b>Planned Developments</b> <ul style="list-style-type: none"><li>Community Resource</li><li>Utility/Renewable Energy</li><li>Industrial</li><li>Residential</li><li>School</li><li>Upper Magnolia Green (Chesterfield County EDA)</li></ul> <b>Easements and Public Lands</b> <ul style="list-style-type: none"><li>Irvin G. Horner Park (Chesterfield County)</li></ul>
---	---	--	---