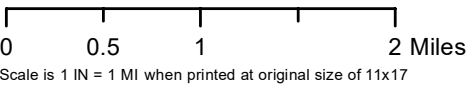


CONSTRUCTION ACCESS MAP

Unity-Tunstall 230 kV Lines Phase 1
Lunenburg and Mecklenburg Counties, Virginia
Client:
Dominion Energy Virginia

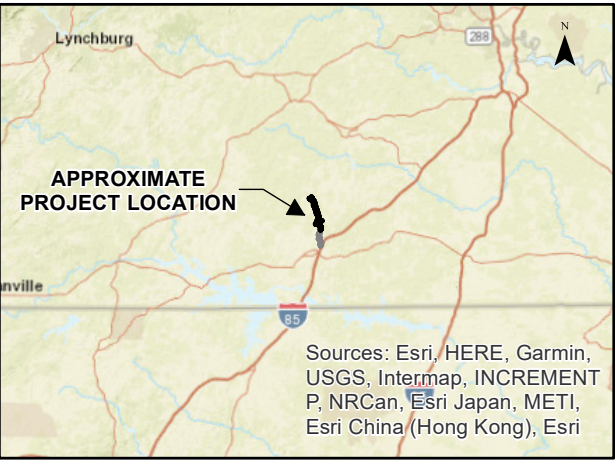
C2 Env Project:	Prepared By:	Date:
0277	JRC	12/20/23

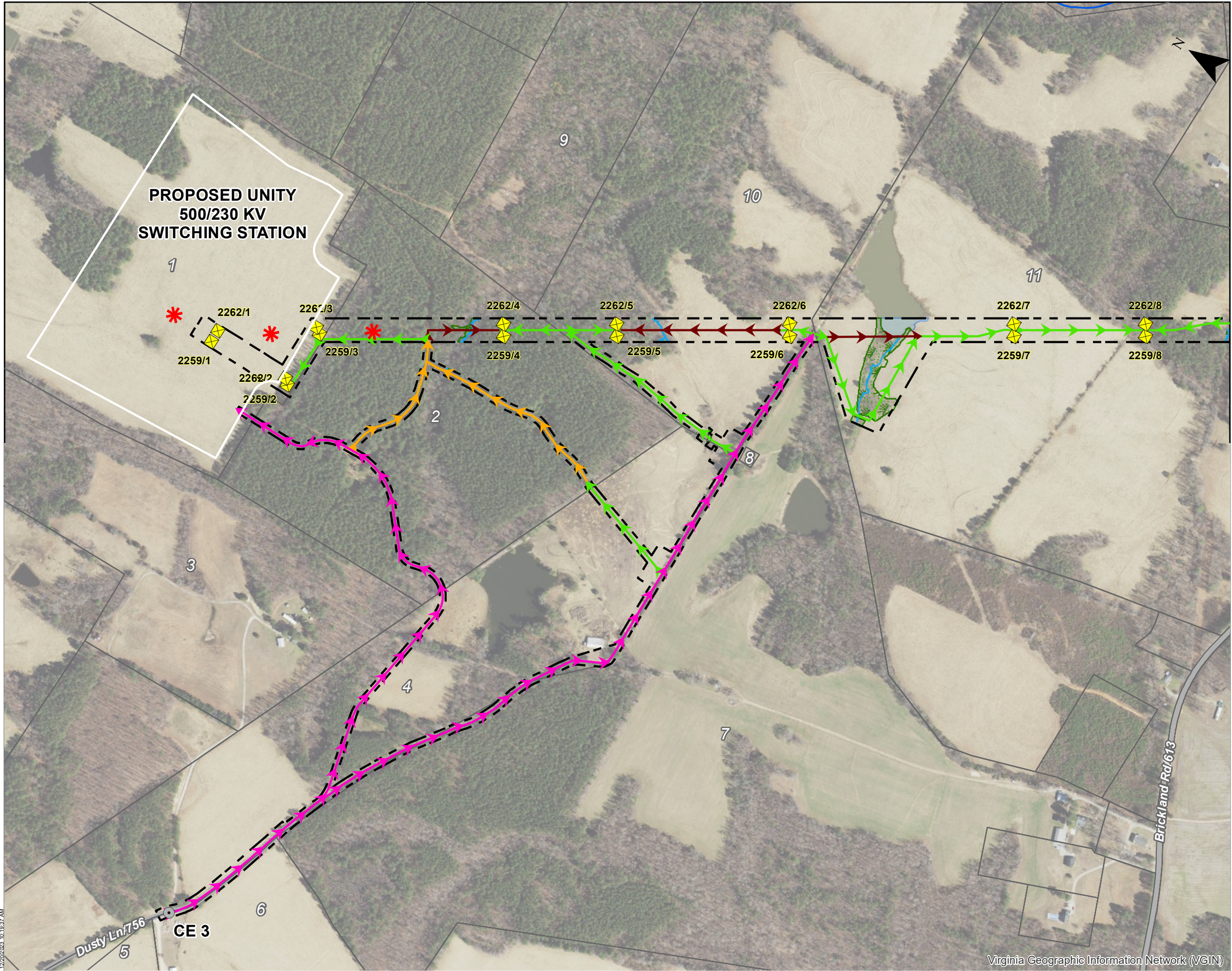


SITE DATA

- Phase 1 Project Area
- Phase 2 Project Area (Under Separate Cover)
- Map Sheet

- Notes:
1. Basemap from ESRI World Street Map and VBMP Aerial Imagery 2022
 2. Structure locations and right-of-way dimensions provided by Dominion Energy
 3. Parcels and roads from VGIN
 4. NWI from USFWS
 5. Access based on field review with Dominion 20230420 unless otherwise noted

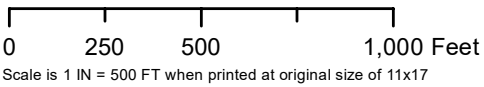




CONSTRUCTION ACCESS MAP

Unity-Tunstall 230 kV Lines Phase 1
Lunenburg and Mecklenburg Counties, Virginia
Client:
Dominion Energy Virginia

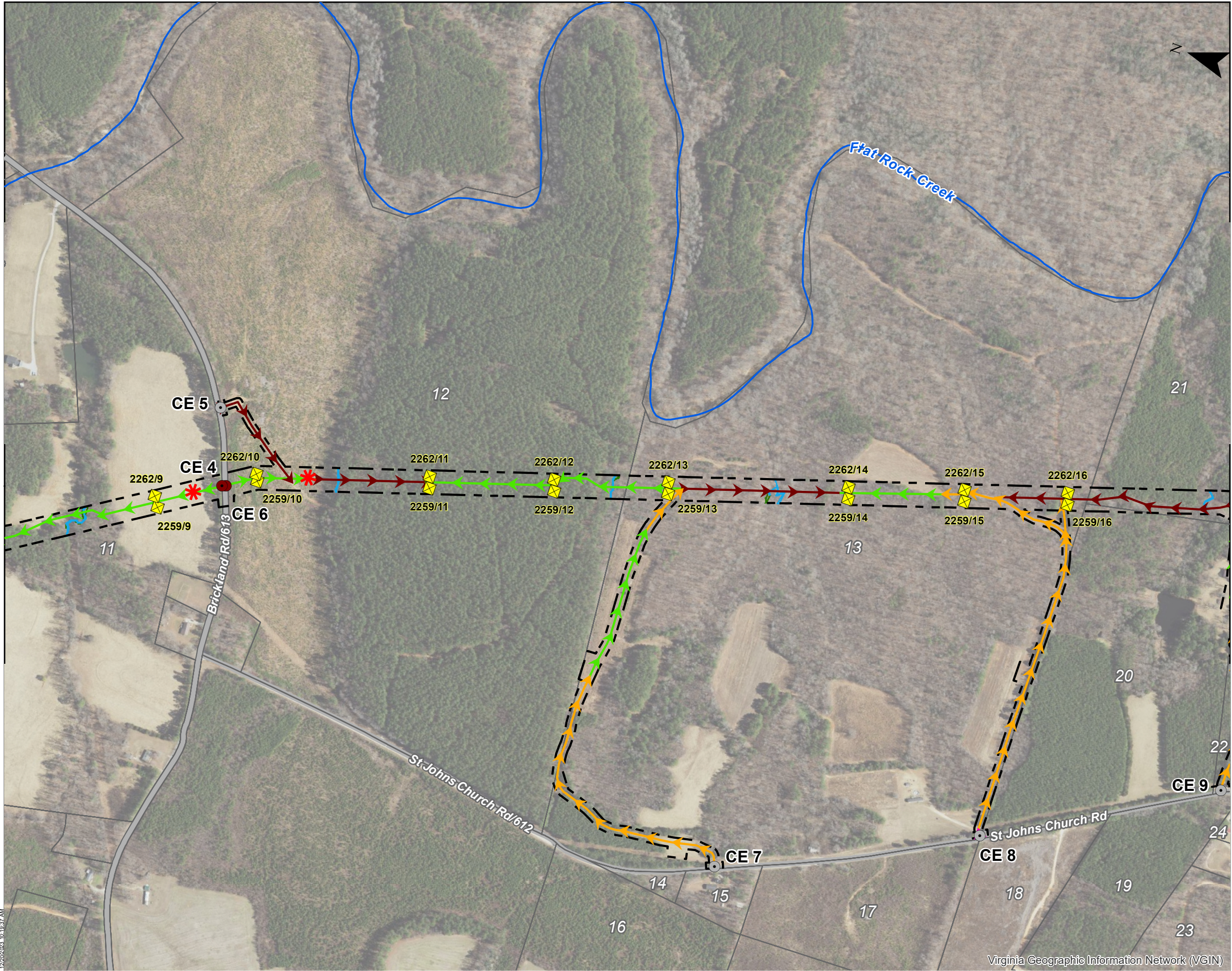
C2 Env Project:	Prepared By:	Date:
0277	JRC	12/20/23



SITE DATA

- Project Area Phase 1
- Proposed Structure
 - Existing Construction Entrance
 - New Permanent Construction Entrance
 - Approximate Pull Pad Location
 - Preferred Access, Existing Gravel
 - Preferred Access, Existing Unimproved
 - Preferred Access, No Existing
 - Alternate Access
 - Access Route for Forestry Only
 - Approximate Stream Channel Limits
 - Approximate Wetland Limits
 - Approximate Jurisdictional Ditch Limits
 - Approximate Open Water Limits
 - Parcel Boundary
 - County Boundary





CONSTRUCTION ACCESS MAP

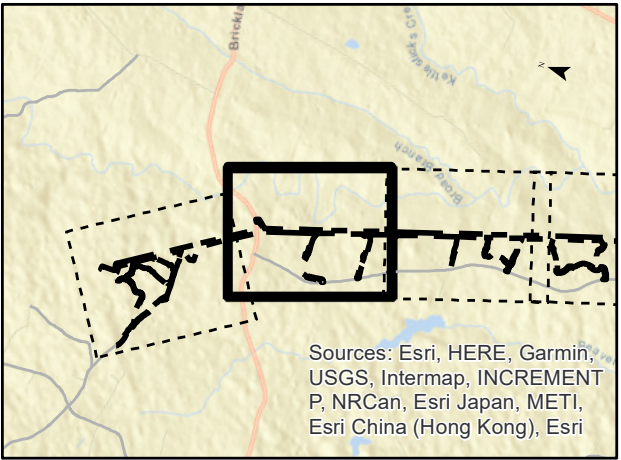
Unity-Tunstall 230 kV Lines Phase 1
Lunenburg and Mecklenburg Counties, Virginia
Client:
Dominion Energy Virginia

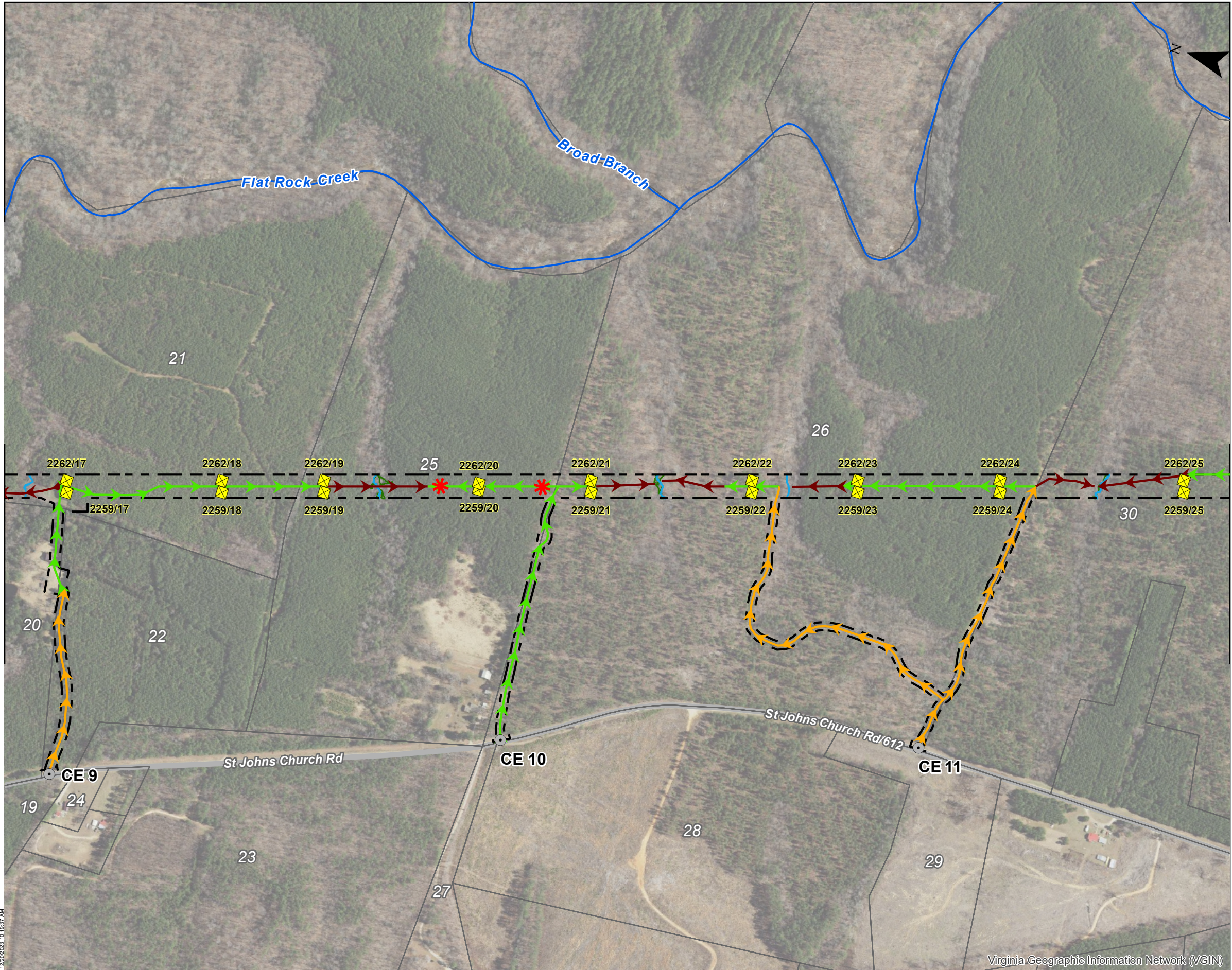
C2 Env Project:	Prepared By:	Date:
0277	JRC	12/20/23

0 250 500 1,000 Feet
Scale is 1 IN = 500 FT when printed at original size of 11x17

SITE DATA

- Project Area Phase 1
- Proposed Structure
- Existing Construction Entrance
- New Permanent Construction Entrance
- Approximate Pull Pad Location
- Preferred Access, Existing Gravel
- Preferred Access, Existing Unimproved
- Preferred Access, No Existing
- Alternate Access
- Access Route for Forestry Only
- Approximate Stream Channel Limits
- Approximate Wetland Limits
- Approximate Jurisdictional Ditch Limits
- Approximate Open Water Limits
- Parcel Boundary
- County Boundary





CONSTRUCTION ACCESS MAP

Unity-Tunstall 230 kV Lines Phase 1
Lunenburg and Mecklenburg Counties, Virginia

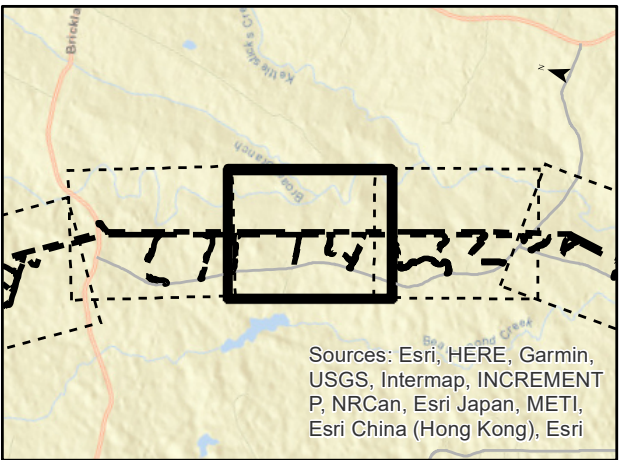
Client:
Dominion Energy Virginia

C2 Env Project:	Prepared By:	Date:
0277	JRC	12/20/23

0 250 500 1,000 Feet
Scale is 1 IN = 500 FT when printed at original size of 11x17

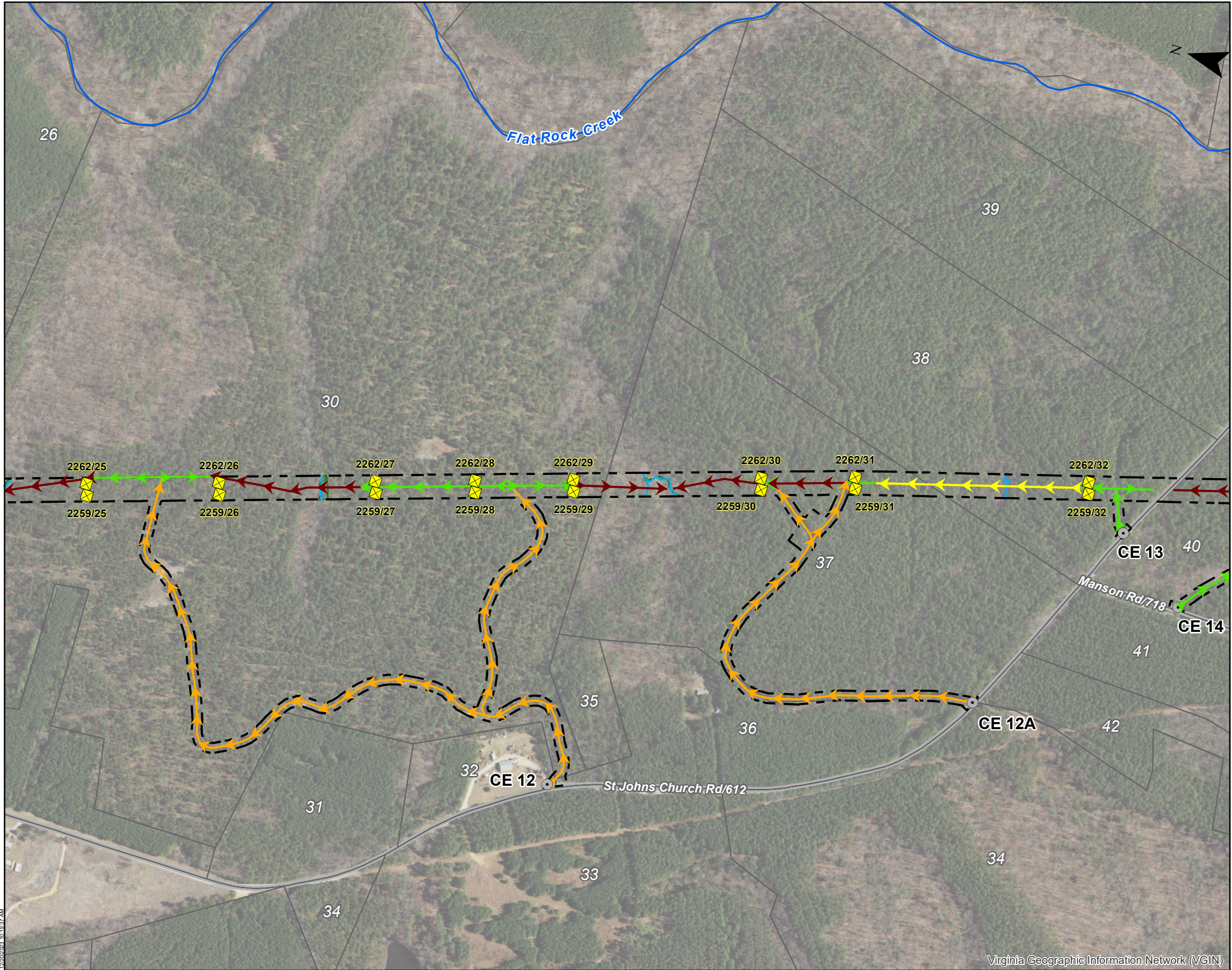
SITE DATA

- Project Area Phase 1
- Proposed Structure
- Existing Construction Entrance
- New Permanent Construction Entrance
- Approximate Pull Pad Location
- Preferred Access, Existing Gravel
- Preferred Access, Existing Unimproved
- Preferred Access, No Existing
- Alternate Access
- Access Route for Forestry Only
- Approximate Stream Channel Limits
- Approximate Wetland Limits
- Approximate Jusristictional Ditch Limits
- Approximate Open Water Limits
- Parcel Boundary
- County Boundary



Sources: Esri, HERE, Garmin, USGS, Intermap, INCREMENT P, NRCan, Esri Japan, METI, Esri China (Hong Kong), Esri

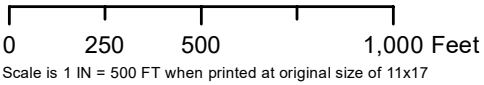




CONSTRUCTION ACCESS MAP

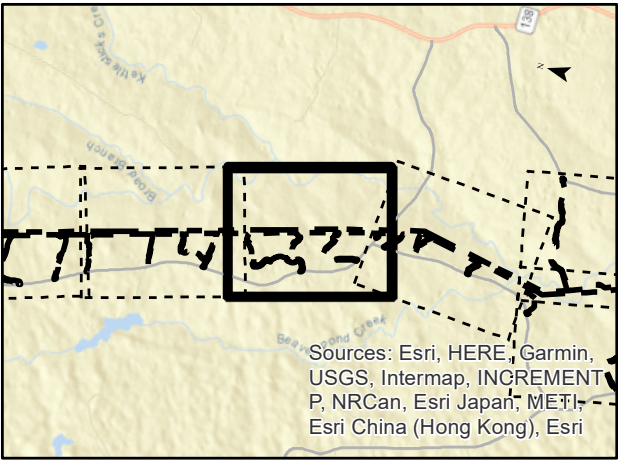
Unity-Tunstall 230 kV Lines Phase 1
Lunenburg and Mecklenburg Counties, Virginia
Client:
Dominion Energy Virginia

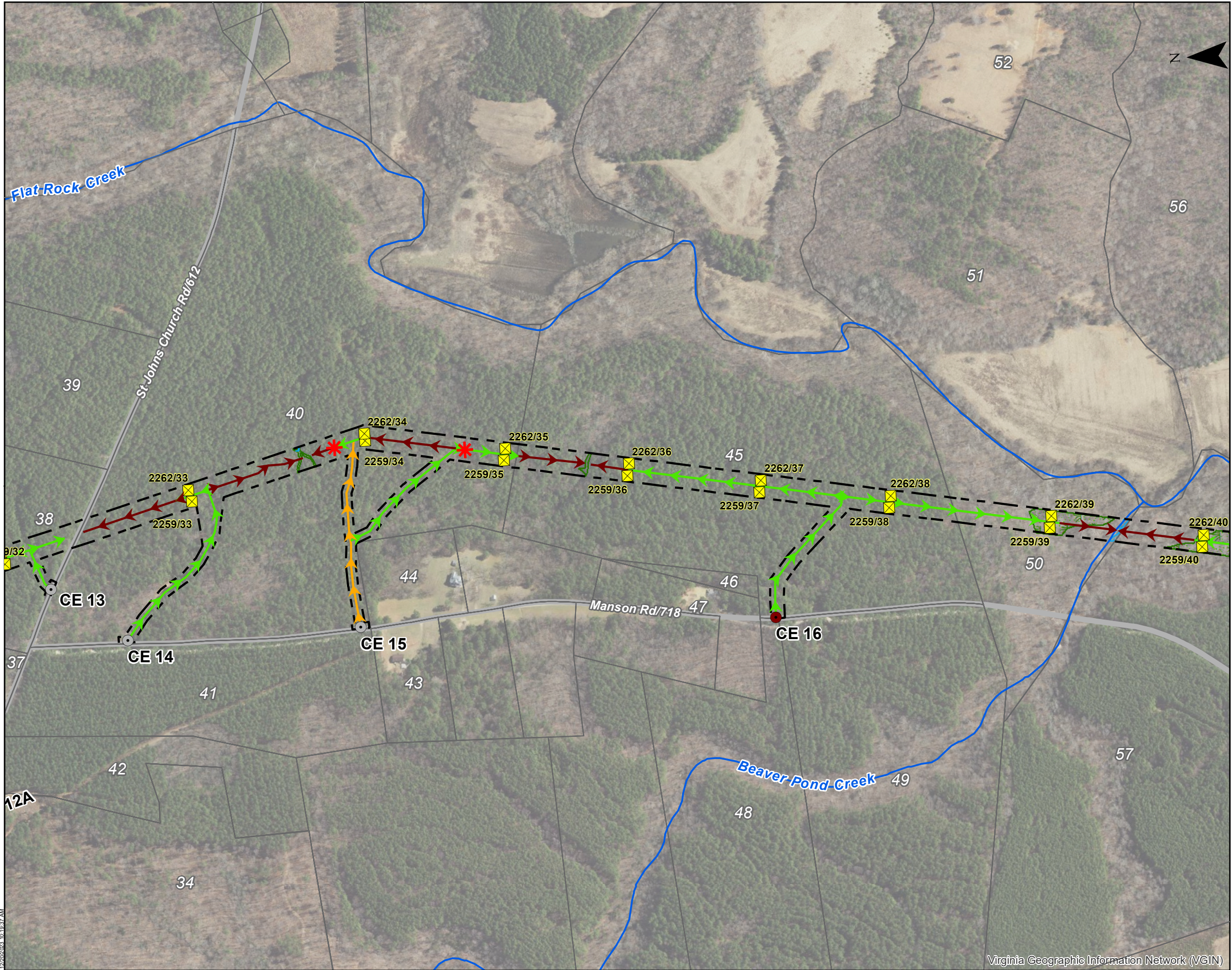
C2 Env Project:	Prepared By:	Date:
0277	JRC	12/20/23



SITE DATA

- Project Area Phase 1
- Proposed Structure
- Existing Construction Entrance
- New Permanent Construction Entrance
- Approximate Pull Pad Location
- Preferred Access, Existing Gravel
- Preferred Access, Existing Unimproved
- Preferred Access, No Existing
- Alternate Access
- Access Route for Forestry Only
- Approximate Stream Channel Limits
- Approximate Wetland Limits
- Approximate Jurisdictional Ditch Limits
- Approximate Open Water Limits
- Parcel Boundary
- County Boundary

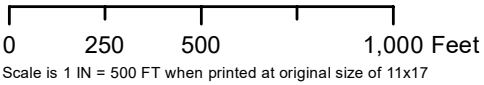




CONSTRUCTION ACCESS MAP

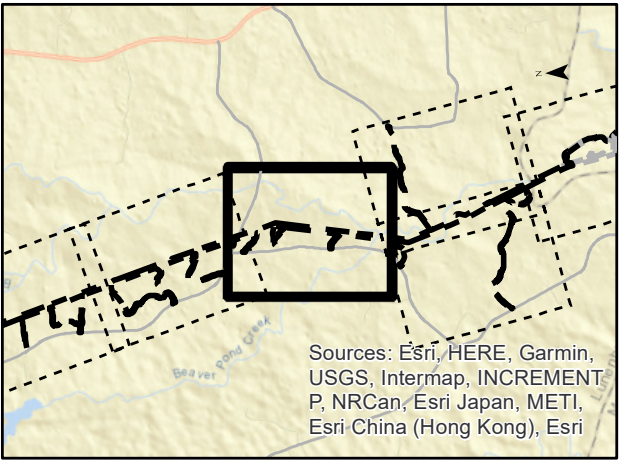
Unity-Tunstall 230 kV Lines Phase 1
Lunenburg and Mecklenburg Counties, Virginia
Client:
Dominion Energy Virginia

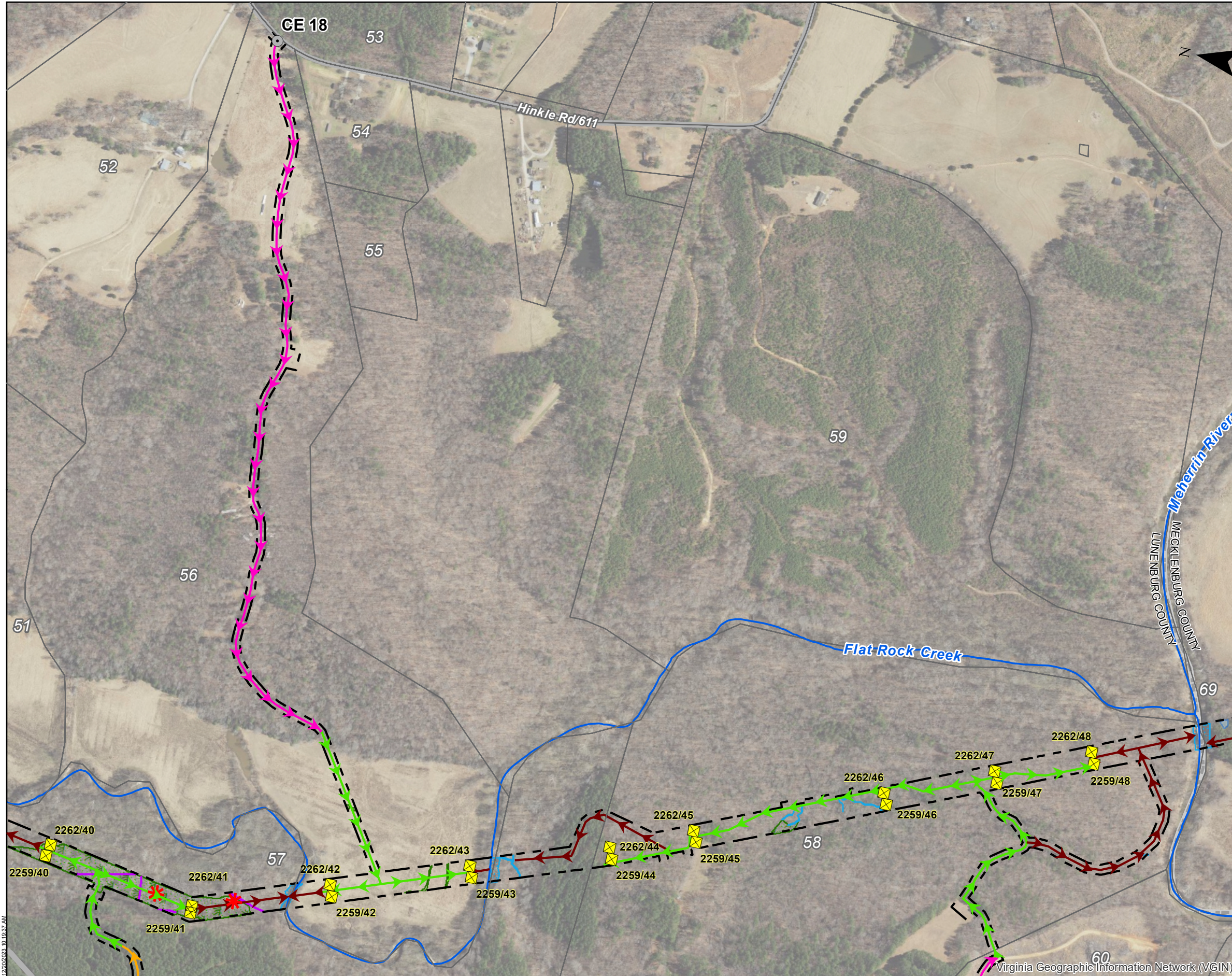
C2 Env Project:	Prepared By:	Date:
0277	JRC	12/20/23



SITE DATA

- Project Area Phase 1
- Proposed Structure
- Existing Construction Entrance
- New Permanent Construction Entrance
- Approximate Pull Pad Location
- Preferred Access, Existing Gravel
- Preferred Access, Existing Unimproved
- Preferred Access, No Existing
- Alternate Access
- Access Route for Forestry Only
- Approximate Stream Channel Limits
- Approximate Wetland Limits
- Approximate Jurisdictional Ditch Limits
- Approximate Open Water Limits
- Parcel Boundary
- County Boundary





CONSTRUCTION ACCESS MAP

Unity-Tunstall 230 kV Lines Phase 1
Lunenburg and Mecklenburg Counties, Virginia

Client:
Dominion Energy Virginia

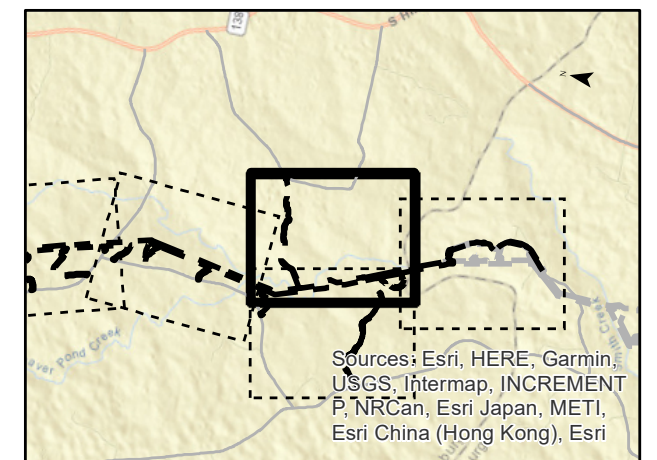
C2 Env Project:	Prepared By:	Date:
0277	JRC	12/20/23

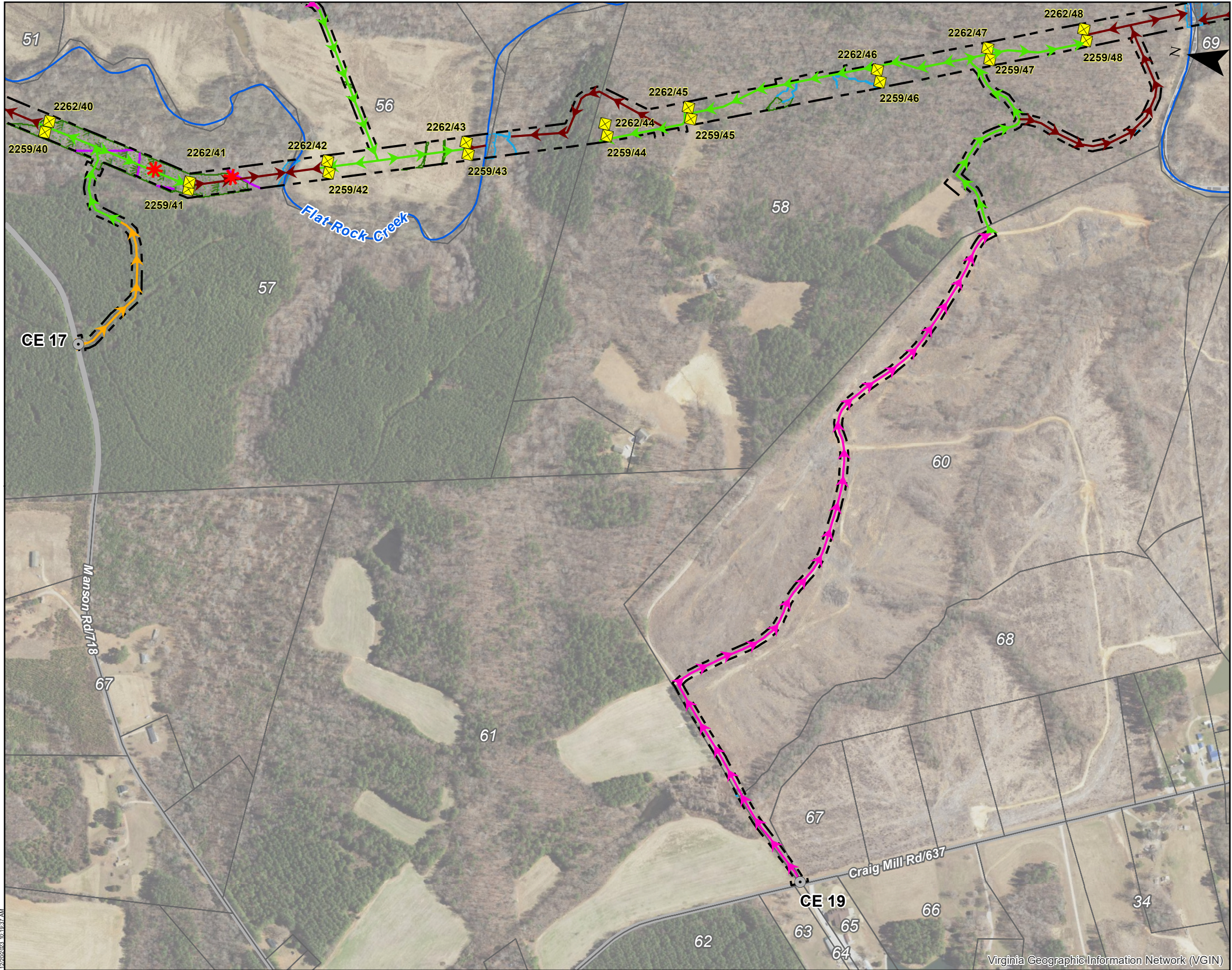
0 250 500 1,000 Feet
Scale is 1 IN = 500 FT when printed at original size of 11x17

SITE DATA

Project Area Phase 1

- Proposed Structure
- Existing Construction Entrance
- New Permanent Construction Entrance
- Approximate Pull Pad Location
- Preferred Access, Existing Gravel
- Preferred Access, Existing Unimproved
- Preferred Access, No Existing
- Alternate Access
- Access Route for Forestry Only
- Approximate Stream Channel Limits
- Approximate Wetland Limits
- Approximate Jurisdictional Ditch Limits
- Approximate Open Water Limits
- Parcel Boundary
- County Boundary





CONSTRUCTION ACCESS MAP

Unity-Tunstall 230 kV Lines Phase 1
Lunenburg and Mecklenburg Counties, Virginia

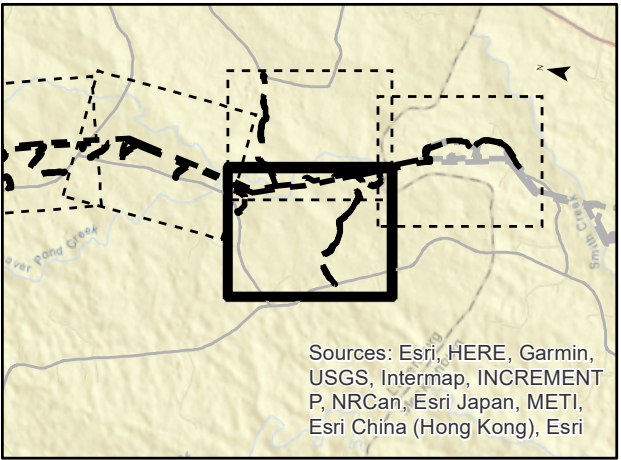
Client:
Dominion Energy Virginia

C2 Env Project:	Prepared By:	Date:
0277	JRC	12/20/23

0 250 500 1,000 Feet
Scale is 1 IN = 500 FT when printed at original size of 11x17

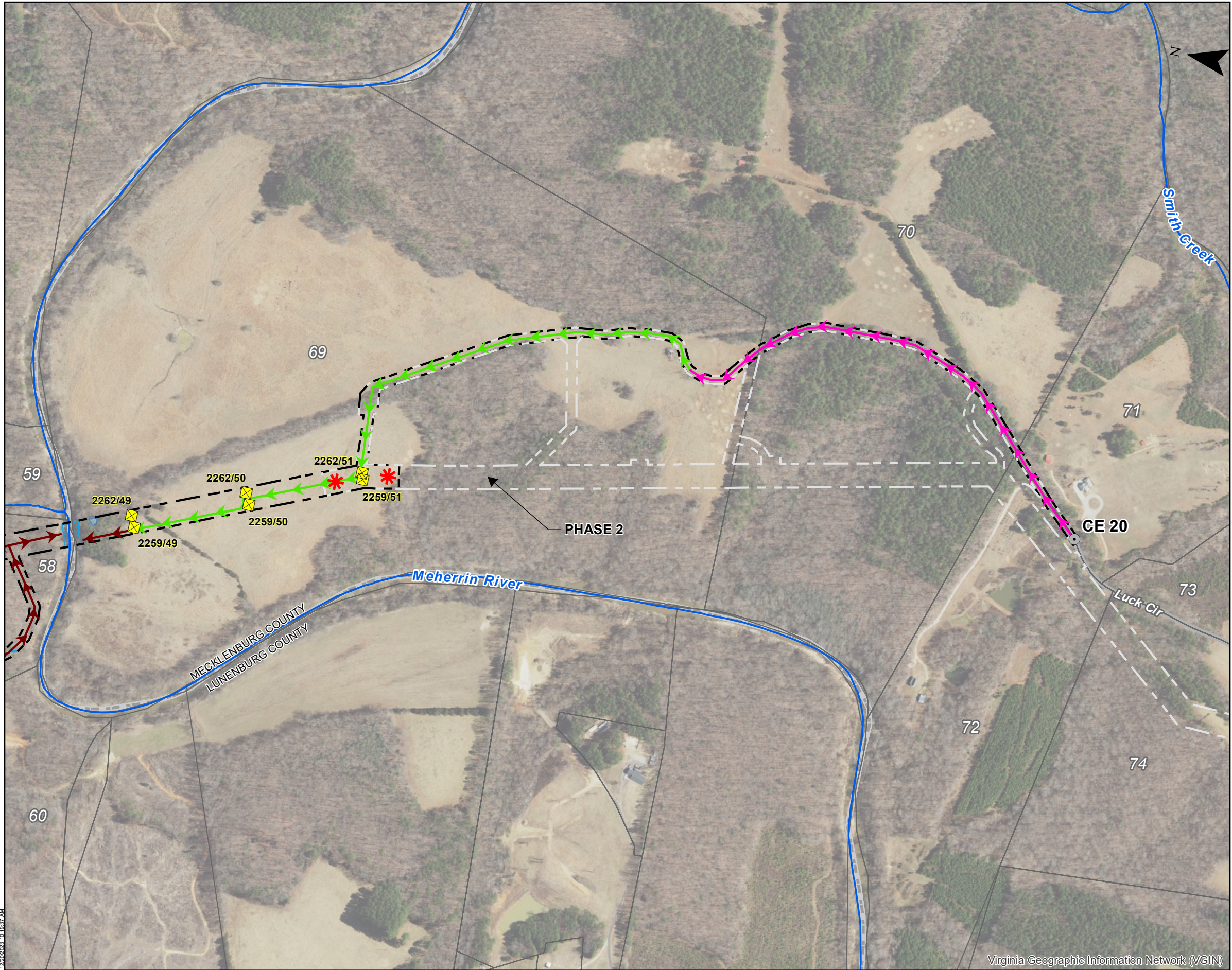
SITE DATA

- Project Area Phase 1
- Proposed Structure
- Existing Construction Entrance
- New Permanent Construction Entrance
- Approximate Pull Pad Location
- Preferred Access, Existing Gravel
- Preferred Access, Existing Unimproved
- Preferred Access, No Existing
- Alternate Access
- Access Route for Forestry Only
- Approximate Stream Channel Limits
- Approximate Wetland Limits
- Approximate Jurisdictional Ditch Limits
- Approximate Open Water Limits
- Parcel Boundary
- County Boundary



Sources: Esri, HERE, Garmin,
USGS, Intermap, INCREMENT
P, NRCAN, Esri Japan, METI,
Esri China (Hong Kong), Esri

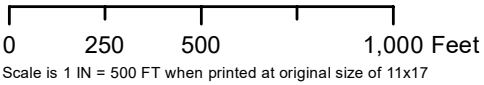




CONSTRUCTION ACCESS MAP

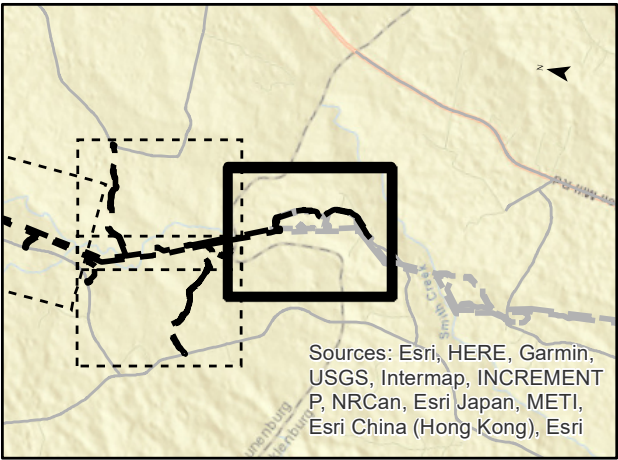
Unity-Tunstall 230 kV Lines Phase 1
Lunenburg and Mecklenburg Counties, Virginia
Client:
Dominion Energy Virginia

C2 Env Project:	Prepared By:	Date:
0277	JRC	12/20/23



SITE DATA

- Project Area Phase 1
- Proposed Structure
- Existing Construction Entrance
- New Permanent Construction Entrance
- Approximate Pull Pad Location
- Preferred Access, Existing Gravel
- Preferred Access, Existing Unimproved
- Preferred Access, No Existing
- Alternate Access
- Access Route for Forestry Only
- Approximate Stream Channel Limits
- Approximate Wetland Limits
- Approximate Jurisdictional Ditch Limits
- Approximate Open Water Limits
- Parcel Boundary
- County Boundary



Sources: Esri, HERE, Garmin,
USGS, Intermap, INCREMENT
P, NRCAN, Esri Japan, METI,
Esri China (Hong Kong), Esri

