

SEPTA TO YADKIN

Electric Transmission Line Rebuild Project

Photo Location Map

1 Viewpoint Location — Transmission Line ▲ Substation





EXISTING CONDITIONS



PROPOSED CONDITIONS

Photo simulations are for discussion purposes only. Final design is subject to change pending public, engineering, and regulatory review.

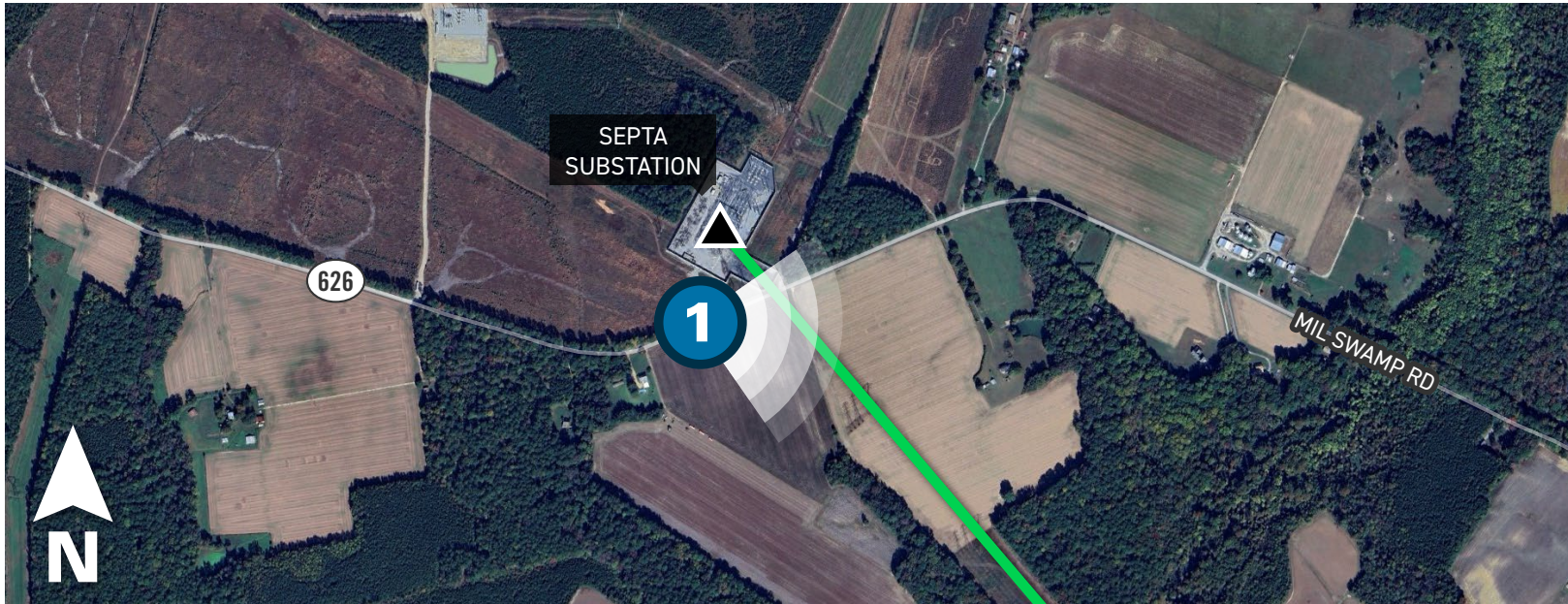
SEPTA TO YADKIN

Electric Transmission Line Rebuild Project

Viewpoint 1

Date: 11/08/2024 Time: 9:53 am Viewing Direction: East

1 Viewpoint Location — Transmission Line ▲ Substation





EXISTING CONDITIONS



PROPOSED CONDITIONS

Photo simulations are for discussion purposes only. Final design is subject to change pending public, engineering, and regulatory review.

SEPTA TO YADKIN

Electric Transmission Line Rebuild Project

Viewpoint 2

Date: 11/08/2024 Time: 9:40 am Viewing Direction: North

2 Viewpoint Location — Transmission Line





EXISTING CONDITIONS



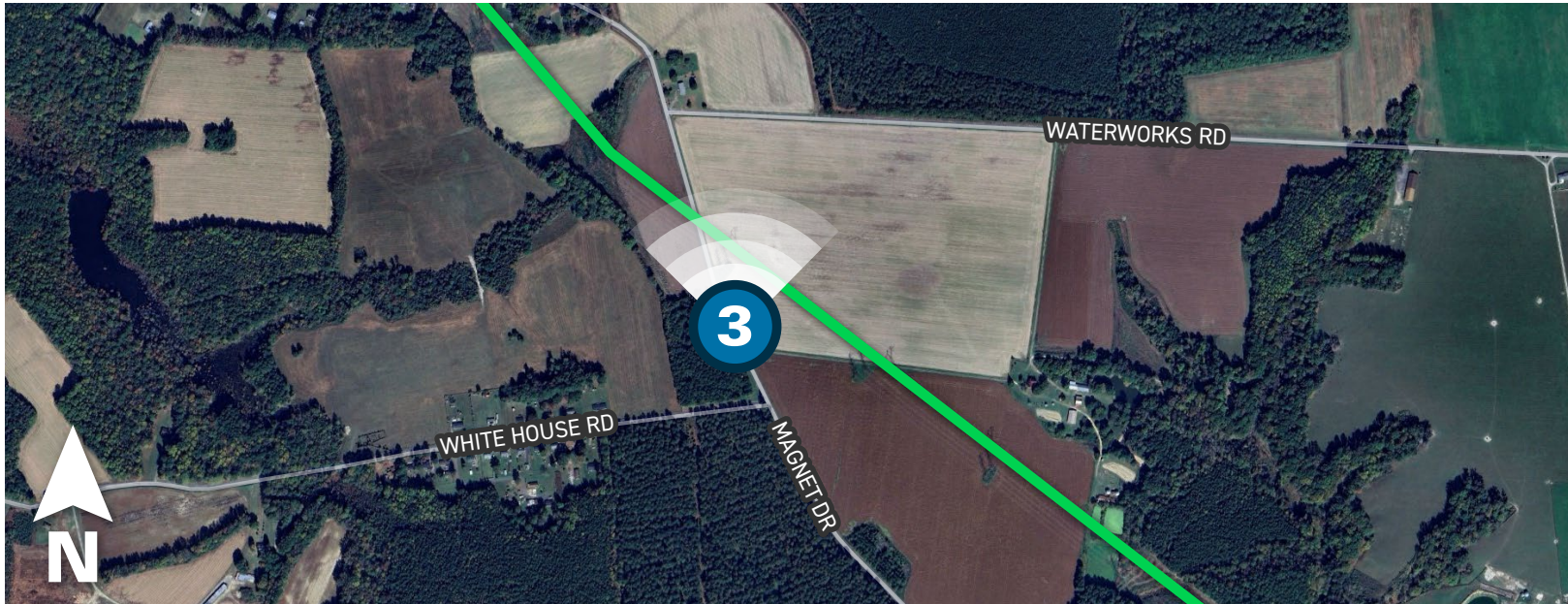
PROPOSED CONDITIONS

Photo simulations are for discussion purposes only. Final design is subject to change pending public, engineering, and regulatory review.

SEPTA TO YADKIN

Electric Transmission Line Rebuild Project

Viewpoint 3
Date: 11/07/2024 Time: 3:02 pm Viewing Direction: North
3 Viewpoint Location — Transmission Line





EXISTING CONDITIONS



PROPOSED CONDITIONS

Photo simulations are for discussion purposes only. Final design is subject to change pending public, engineering, and regulatory review.

SEPTA TO YADKIN

Electric Transmission Line Rebuild Project

Viewpoint 4

Date: 11/08/2024 Time: 10:31 am Viewing Direction: West

 Viewpoint Location  Transmission Line





EXISTING CONDITIONS



PROPOSED CONDITIONS

Photo simulations are for discussion purposes only. Final design is subject to change pending public, engineering, and regulatory review.

SEPTA TO YADKIN

Electric Transmission Line Rebuild Project

Viewpoint 5

Date: 11/08/2024 Time: 10:54 am Viewing Direction: West

Viewpoint Location Transmission Line





EXISTING CONDITIONS



PROPOSED CONDITIONS

Photo simulations are for discussion purposes only. Final design is subject to change pending public, engineering, and regulatory review.

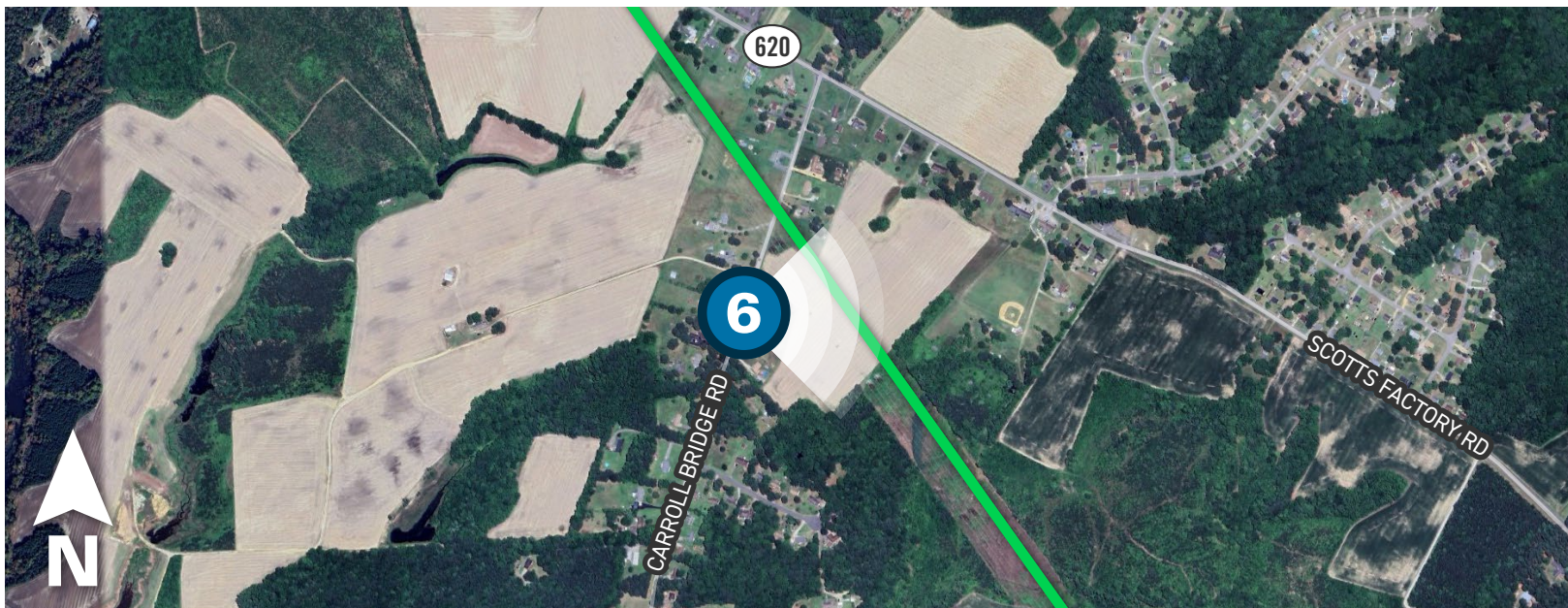
SEPTA TO YADKIN

Electric Transmission Line Rebuild Project

Viewpoint 6

Date: 11/07/2024 Time: 2:13 pm Viewing Direction: East

6 Viewpoint Location — Transmission Line





EXISTING CONDITIONS



PROPOSED CONDITIONS

Photo simulations are for discussion purposes only. Final design is subject to change pending public, engineering, and regulatory review.

SEPTA TO YADKIN

Electric Transmission Line Rebuild Project

Viewpoint 7

Date: 11/07/2024 Time: 1:45 pm Viewing Direction: South

7 Viewpoint Location Transmission Line





EXISTING CONDITIONS



PROPOSED CONDITIONS

Photo simulations are for discussion purposes only. Final design is subject to change pending public, engineering, and regulatory review.

SEPTA TO YADKIN

Electric Transmission Line Rebuild Project

Viewpoint 8

Date: 11/07/2024 Time: 12:25 pm Viewing Direction: Northwest

8 Viewpoint Location — Transmission Line





EXISTING CONDITIONS



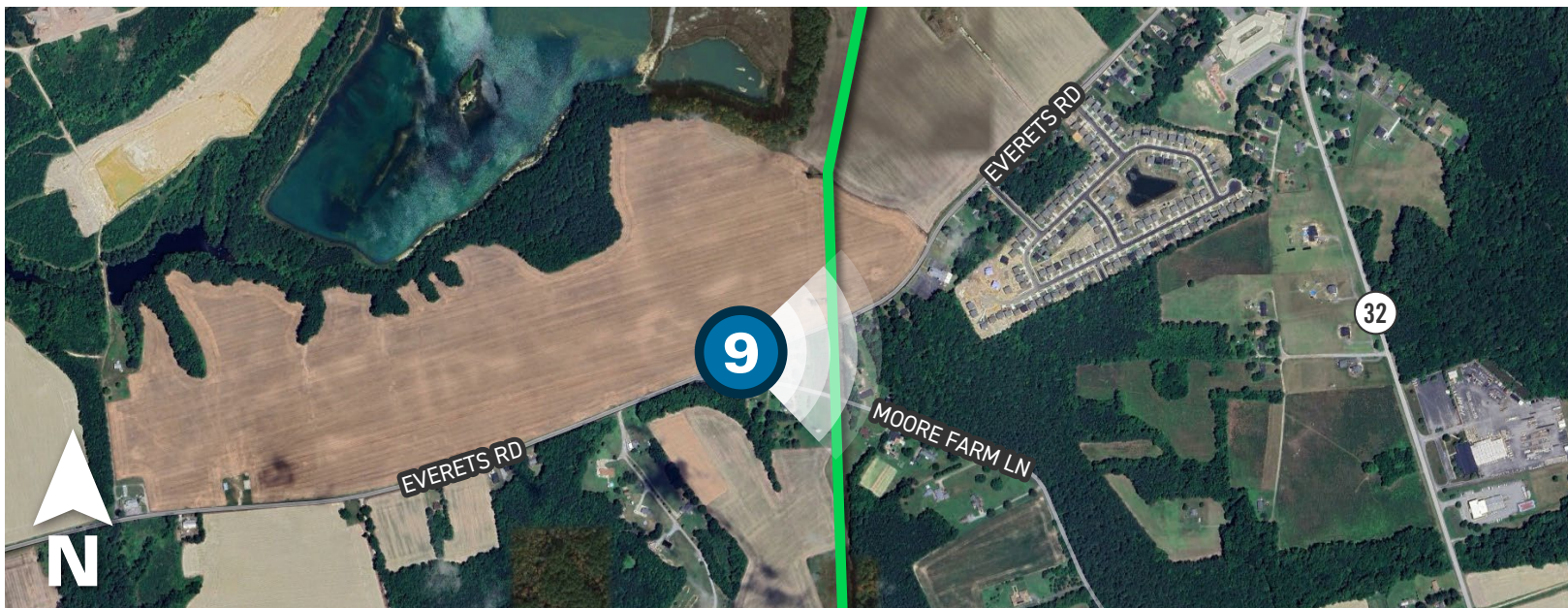
PROPOSED CONDITIONS

Photo simulations are for discussion purposes only. Final design is subject to change pending public, engineering, and regulatory review.

SEPTA TO YADKIN

Electric Transmission Line Rebuild Project

Viewpoint 9
Date: 11/07/2024 Time: 12:19 pm Viewing Direction: East
9 Viewpoint Location Transmission Line





EXISTING CONDITIONS



PROPOSED CONDITIONS

Photo simulations are for discussion purposes only. Final design is subject to change pending public, engineering, and regulatory review.

SEPTA TO YADKIN

Electric Transmission Line Rebuild Project

Viewpoint 10

Date: 11/07/2024 Time: 11:52 am Viewing Direction: West

10 Viewpoint Location — Transmission Line





EXISTING CONDITIONS



PROPOSED CONDITIONS

Photo simulations are for discussion purposes only. Final design is subject to change pending public, engineering, and regulatory review.

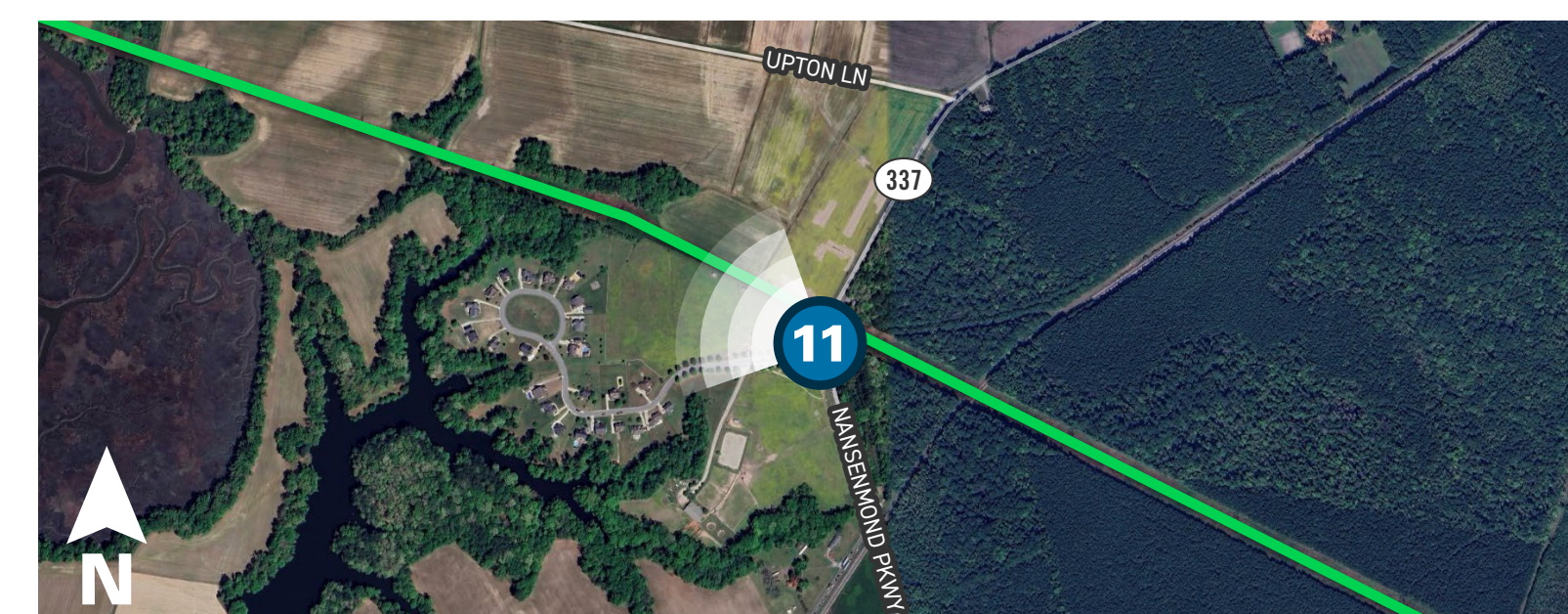
SEPTA TO YADKIN

Electric Transmission Line Rebuild Project

Viewpoint 11

Date: 11/07/2024 Time: 10:53 am Viewing Direction: Northwest

11 Viewpoint Location — Transmission Line





EXISTING CONDITIONS



PROPOSED CONDITIONS

Photo simulations are for discussion purposes only. Final design is subject to change pending public, engineering, and regulatory review.

SEPTA TO YADKIN

Electric Transmission Line Rebuild Project

Viewpoint 12

Date: 11/07/2024 Time: 9:03 am Viewing Direction: Northeast

 Viewpoint Location  Transmission Line





EXISTING CONDITIONS



PROPOSED CONDITIONS

Photo simulations are for discussion purposes only. Final design is subject to change pending public, engineering, and regulatory review.

SEPTA TO YADKIN

Electric Transmission Line Rebuild Project

Viewpoint 13

Date: 11/07/2024 Time: 9:04 am Viewing Direction: West
13 Viewpoint Location — Transmission Line





EXISTING CONDITIONS



PROPOSED CONDITIONS

Photo simulations are for discussion purposes only. Final design is subject to change pending public, engineering, and regulatory review.

SEPTA TO YADKIN

Electric Transmission Line Rebuild Project

Viewpoint 14

Date: 11/08/2024 Time: 11:57 am Viewing Direction: Southwest
14 Viewpoint Location — Transmission Line





EXISTING CONDITIONS



PROPOSED CONDITIONS

Photo simulations are for discussion purposes only. Final design is subject to change pending public, engineering, and regulatory review.

SEPTA TO YADKIN

Electric Transmission Line Rebuild Project

Viewpoint 15

Date: 11/07/2024 Time: 8:48 am Viewing Direction: Northwest
15 Viewpoint Location — Transmission Line ▲ Substation

