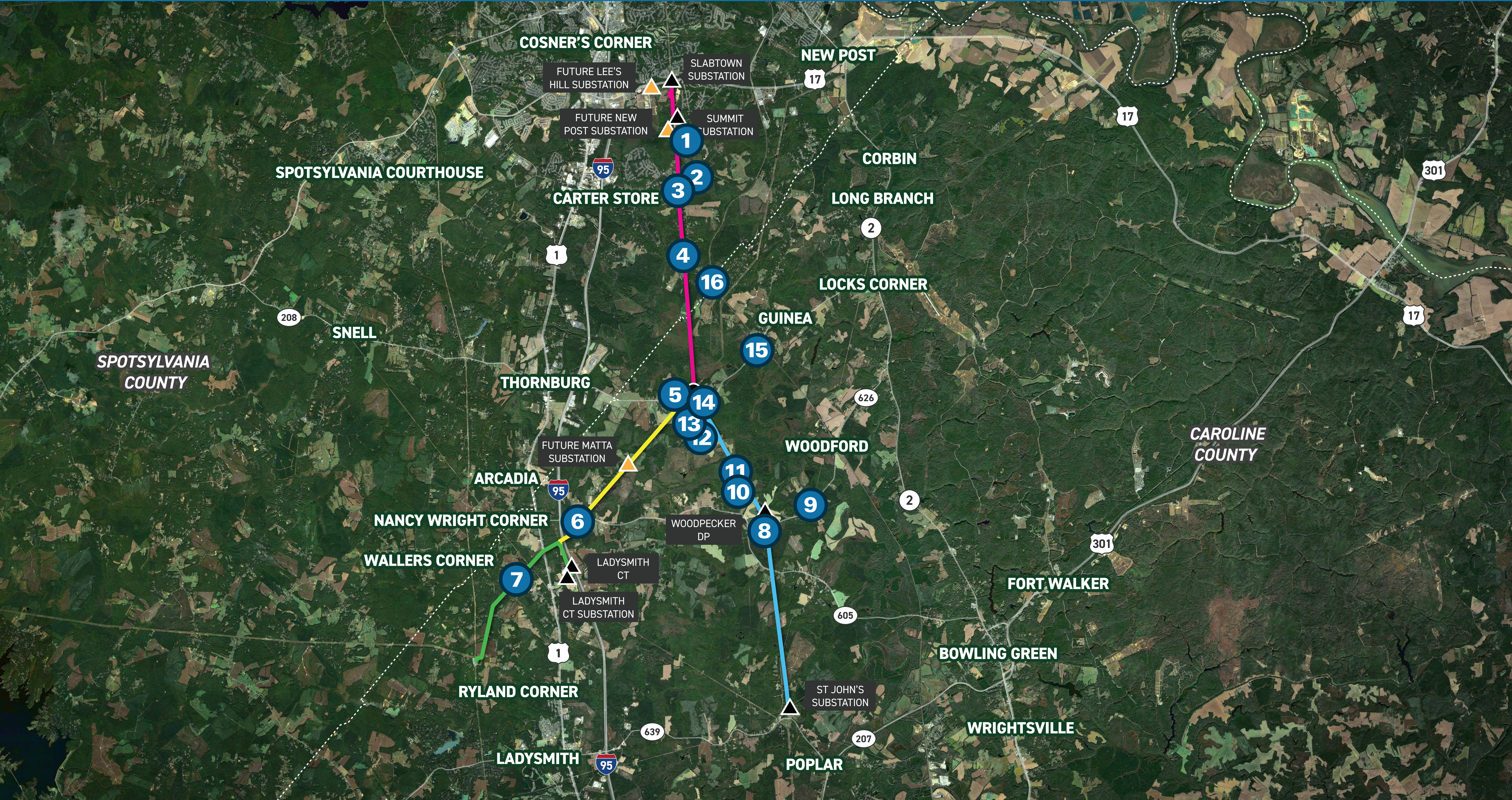


LADYSMITH – ST. JOHN'S – LEE'S HILL

230 kV Electric Transmission Project

Map Legend

- Corridor 1A
- Corridor 1B
- Corridor 2
- Viewpoint Location
- Corridor 3
- Existing Substation
- Future Substation
- Junction Point

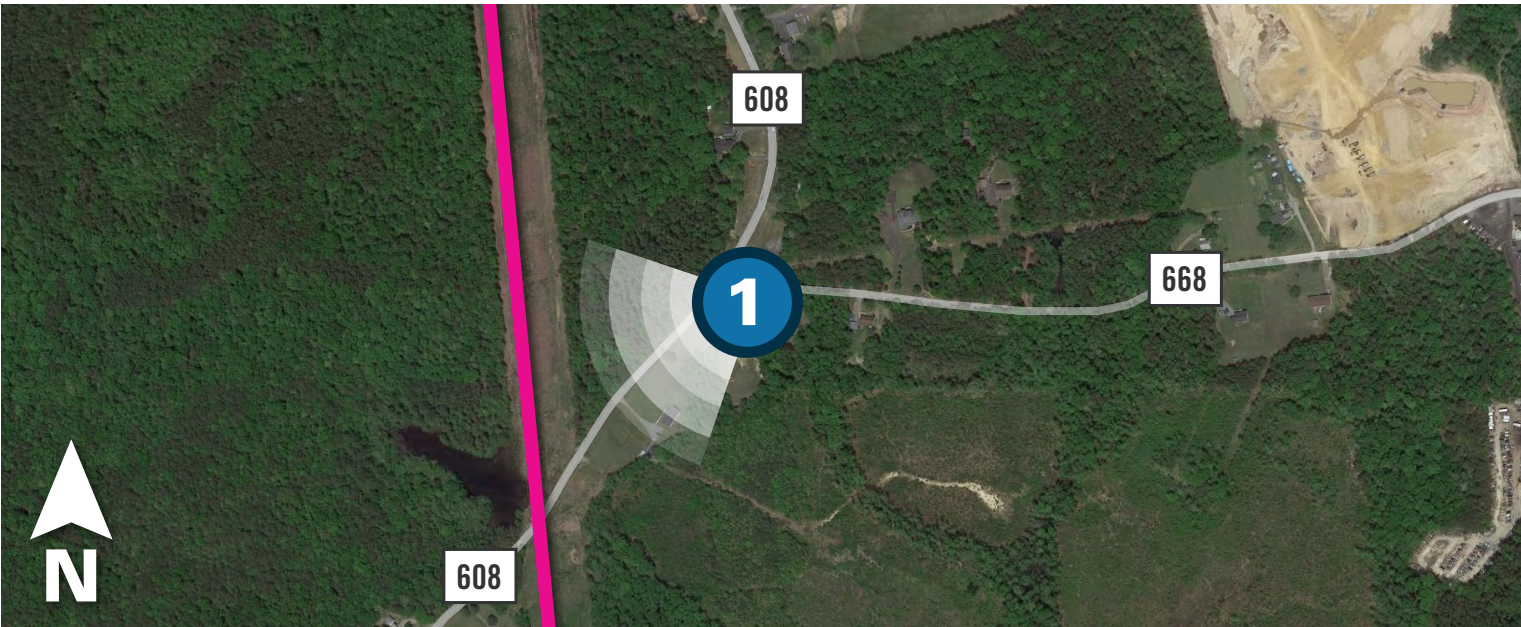


LADYSMITH – ST. JOHN'S – LEE'S HILL

230 kV Electric Transmission Project

Viewpoint 1

Date: 04/30/2024 Time: 6:55 am
Viewing Direction: Southwest
1 Viewpoint Location Corridor 3



EXISTING CONDITIONS



PROPOSED CONDITIONS

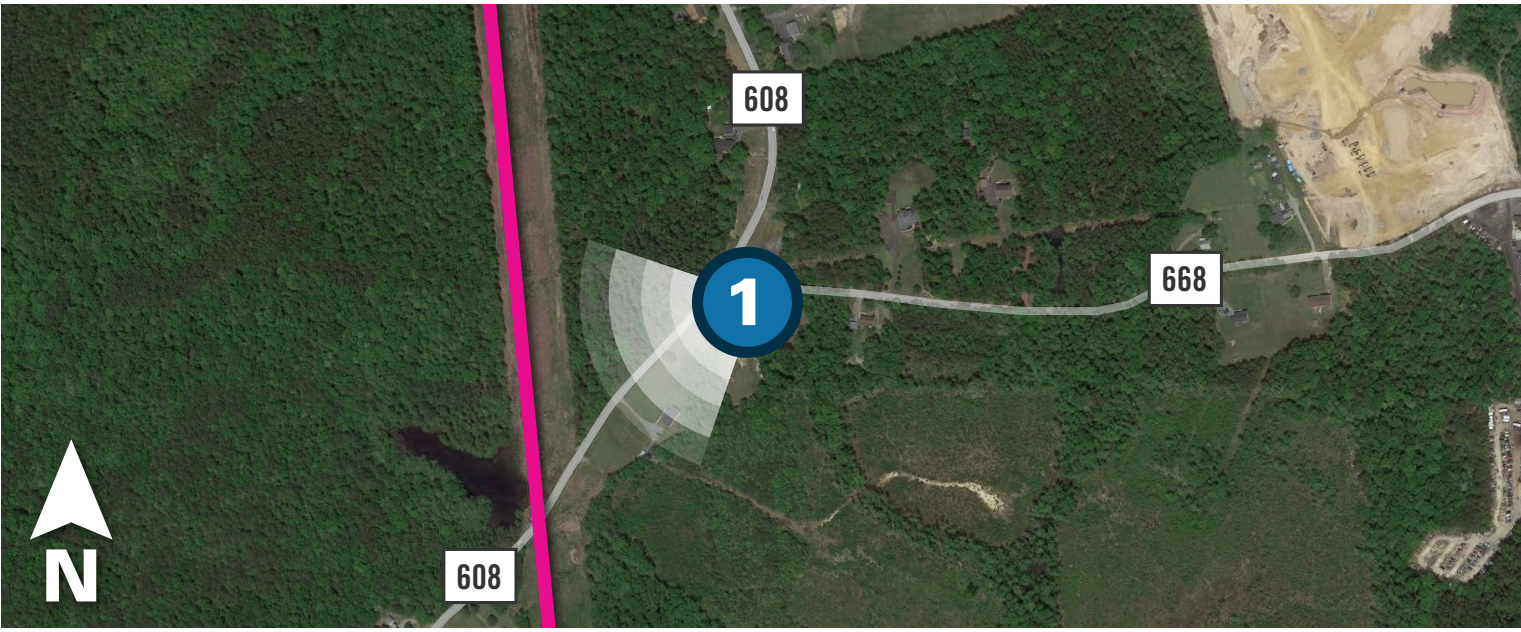
Photo simulations are for discussion purposes only. Final design is subject to change pending public, engineering, and regulatory review.

LADYSMITH – ST. JOHN'S – LEE'S HILL

230 kV Electric Transmission Project

Viewpoint 1

Date: 04/30/2024 Time: 6:55 am
Viewing Direction: Southwest
1 Viewpoint Location Corridor 3



EXISTING CONDITIONS



PROPOSED CONDITIONS

OVERLAY

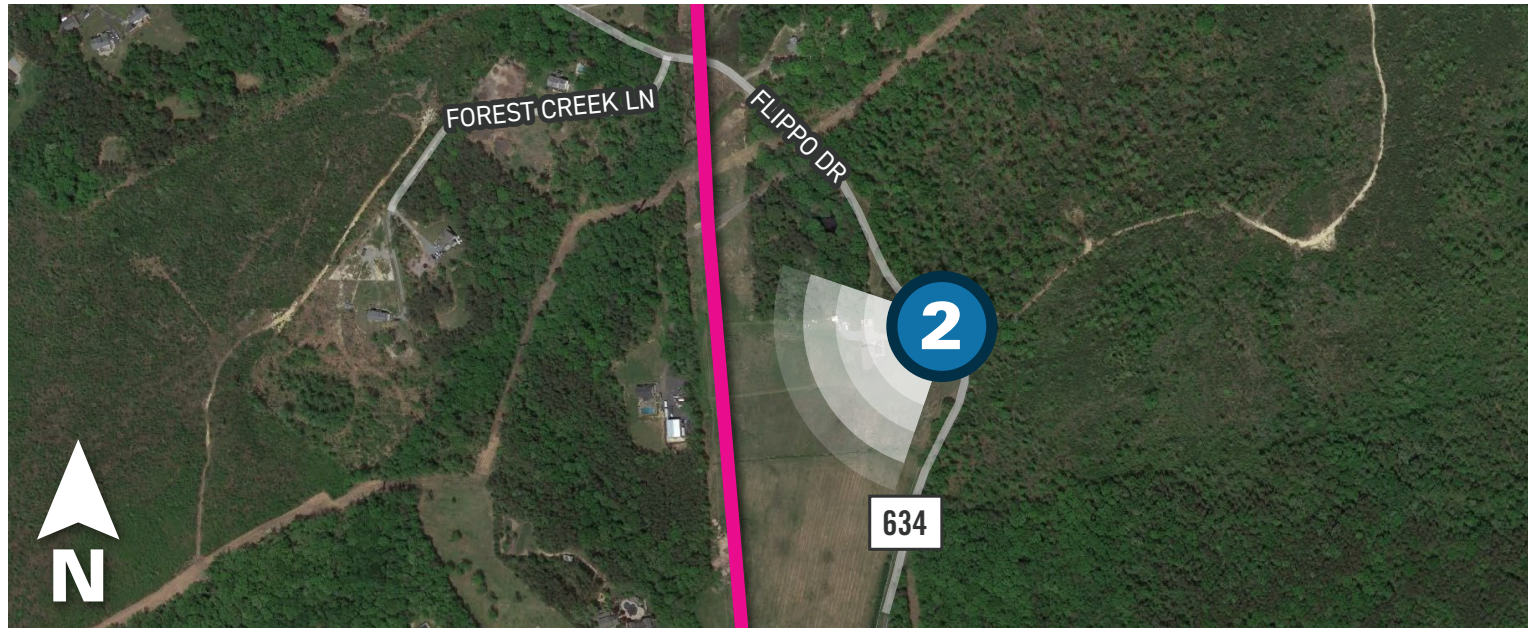
Objects displayed in yellow will be fully or partially obscured by terrain and vegetation.
Photo simulations are for discussion purposes only. Final design is subject to change pending public, engineering, and regulatory review.

LADYSMITH – ST. JOHN'S – LEE'S HILL

230 kV Electric Transmission Project

Viewpoint 2

Date: 04/29/2024 Time: 1:48 pm
Viewing Direction: Southwest
2 Viewpoint Location Corridor 3



EXISTING CONDITIONS



PROPOSED CONDITIONS

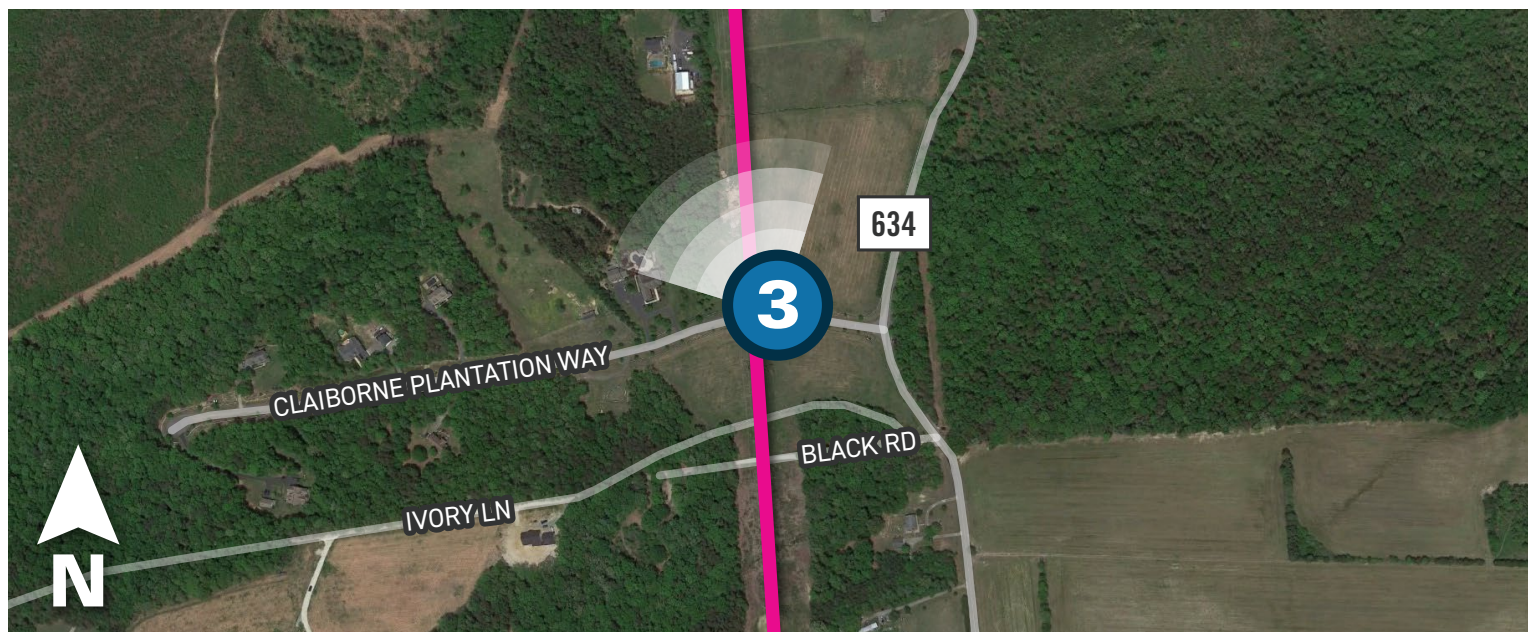
Photo simulations are for discussion purposes only. Final design is subject to change pending public, engineering, and regulatory review.

LADYSMITH – ST. JOHN'S – LEE'S HILL

230 kV Electric Transmission Project

Viewpoint 3

Date: 04/30/2024 Time: 7:06 am
Viewing Direction: Northwest
3 Viewpoint Location Corridor 3



EXISTING CONDITIONS



PROPOSED CONDITIONS

Photo simulations are for discussion purposes only. Final design is subject to change pending public, engineering, and regulatory review.

LADYSMITH – ST. JOHN'S – LEE'S HILL

230 kV Electric Transmission Project

Viewpoint 4

Date: 04/29/2024 Time: 2:13 pm
Viewing Direction: South
4 Viewpoint Location Corridor 3



EXISTING CONDITIONS



PROPOSED CONDITIONS

Photo simulations are for discussion purposes only. Final design is subject to change pending public, engineering, and regulatory review.

LADYSMITH – ST. JOHN'S – LEE'S HILL

230 kV Electric Transmission Project

Viewpoint 5

Date: 04/29/2024 Time: 2:43 pm

Viewing Direction: Northeast

5 Viewpoint Location Corridor 1B



EXISTING CONDITIONS



PROPOSED CONDITIONS



Photo simulations are for discussion purposes only. Final design is subject to change pending public, engineering, and regulatory review.

LADYSMITH – ST. JOHN'S – LEE'S HILL

230 kV Electric Transmission Project

Viewpoint 6

Date: 04/30/2024 Time: 10:55 am

Viewing Direction: Northeast

6 Viewpoint Location Corridor 1B



EXISTING CONDITIONS



PROPOSED CONDITIONS

Photo simulations are for discussion purposes only. Final design is subject to change pending public, engineering, and regulatory review.

LADYSMITH – ST. JOHN'S – LEE'S HILL

230 kV Electric Transmission Project

Viewpoint 7

Date: 04/30/2024 Time: 10:01 am
Viewing Direction: Northeast
7 Viewpoint Location — Corridor 1A



EXISTING CONDITIONS



PROPOSED CONDITIONS

LADYSMITH – ST. JOHN'S – LEE'S HILL

230 kV Electric Transmission Project

Viewpoint 8

Date: 04/30/2024 Time: 11:24 am
Viewing Direction: Northeast
8 Viewpoint Location — Corridor 2



EXISTING CONDITIONS



PROPOSED CONDITIONS



Photo simulations are for discussion purposes only. Final design is subject to change pending public, engineering, and regulatory review.

LADYSMITH – ST. JOHN'S – LEE'S HILL

230 kV Electric Transmission Project

Viewpoint 9

Date: 04/30/2024 Time: 11:16 am
Viewing Direction: West
9 Viewpoint Location — Corridor 2
▲ Existing Substation



Objects displayed in yellow will be fully or partially obscured by terrain and vegetation.

Photo simulations are for discussion purposes only. Final design is subject to change pending public, engineering, and regulatory review.

LADYSMITH – ST. JOHN'S – LEE'S HILL

230 kV Electric Transmission Project

Viewpoint 10

Date: 04/29/2024 Time: 4:27 pm
Viewing Direction: Northeast
10 Viewpoint Location — Corridor 2
▲ Existing Substation



EXISTING CONDITIONS



PROPOSED CONDITIONS

LADYSMITH – ST. JOHN'S – LEE'S HILL

230 kV Electric Transmission Project

Viewpoint 11

Date: 04/30/2024 Time: 1:47 pm
Viewing Direction: Northeast
11 Viewpoint Location — Corridor 2



LADYSMITH – ST. JOHN'S – LEE'S HILL

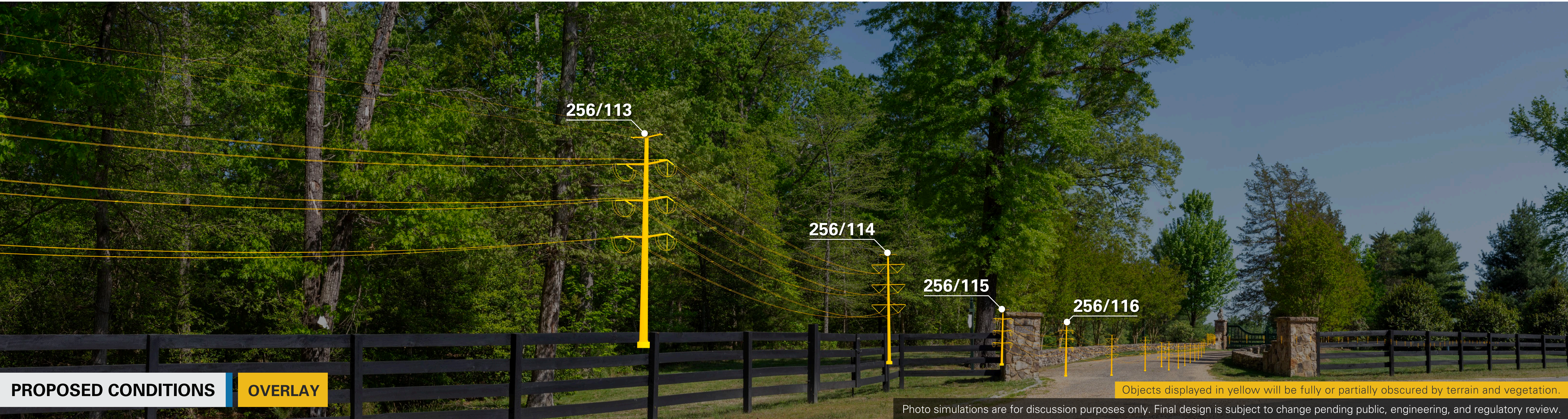
230 kV Electric Transmission Project

Viewpoint 12

Date: 04/29/2024 Time: 3:00 pm
Viewing Direction: Southeast
12 Viewpoint Location — Corridor 2



EXISTING CONDITIONS



PROPOSED CONDITIONS

OVERLAY

Objects displayed in yellow will be fully or partially obscured by terrain and vegetation.
Photo simulations are for discussion purposes only. Final design is subject to change pending public, engineering, and regulatory review.

LADYSMITH – ST. JOHN'S – LEE'S HILL

230 kV Electric Transmission Project

Viewpoint 13

Date: 04/29/2024 Time: 3:00 pm
Viewing Direction: North
13 Viewpoint Location — Corridor 2



EXISTING CONDITIONS



PROPOSED CONDITIONS

OVERLAY

Objects displayed in yellow will be fully or partially obscured by terrain and vegetation.
Photo simulations are for discussion purposes only. Final design is subject to change pending public, engineering, and regulatory review.

LADYSMITH – ST. JOHN'S – LEE'S HILL

230 kV Electric Transmission Project

Viewpoint 14

Date: 04/30/2024 Time: 8:52 am
Viewing Direction: Northwest
14 Viewpoint Location — Corridor 2



EXISTING CONDITIONS



PROPOSED CONDITIONS

LADYSMITH – ST. JOHN'S – LEE'S HILL
230 kV Electric Transmission Project

Viewpoint 15

Date: 04/30/2024 Time: 7:35 am
Viewing Direction: West
15 Viewpoint Location Corridor 3



EXISTING CONDITIONS



PROPOSED CONDITIONS

OVERLAY

Objects displayed in yellow will be fully obscured by terrain and vegetation.

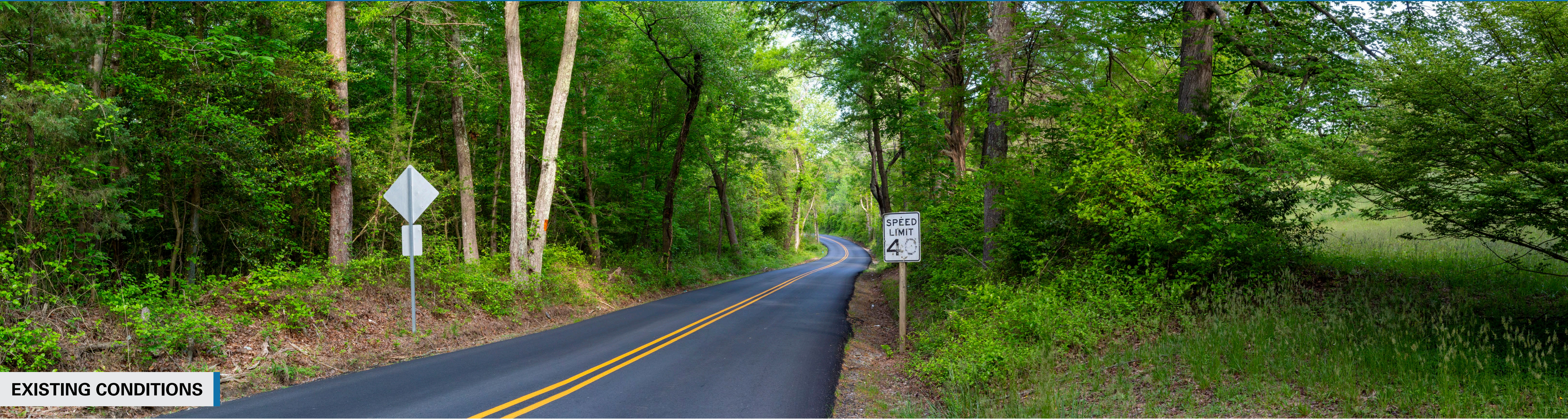
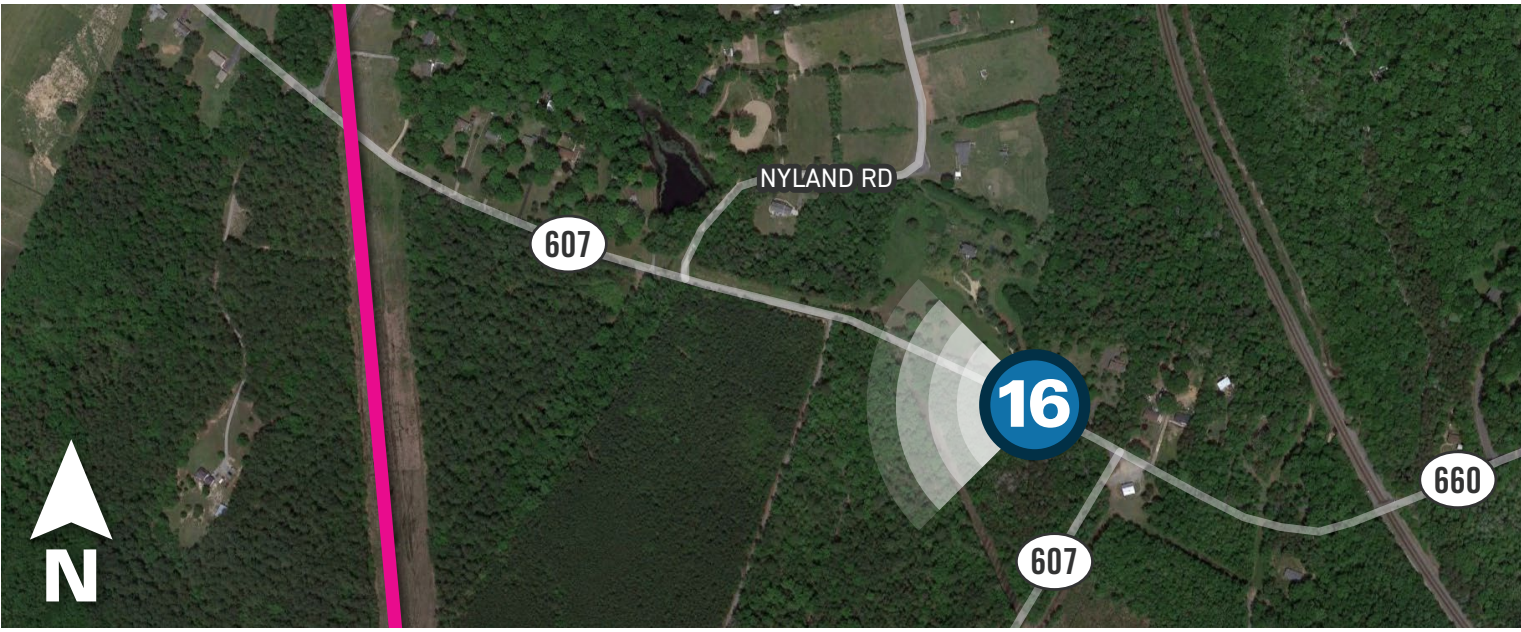
Photo simulations are for discussion purposes only. Final design is subject to change pending public, engineering, and regulatory review.

LADYSMITH – ST. JOHN'S – LEE'S HILL

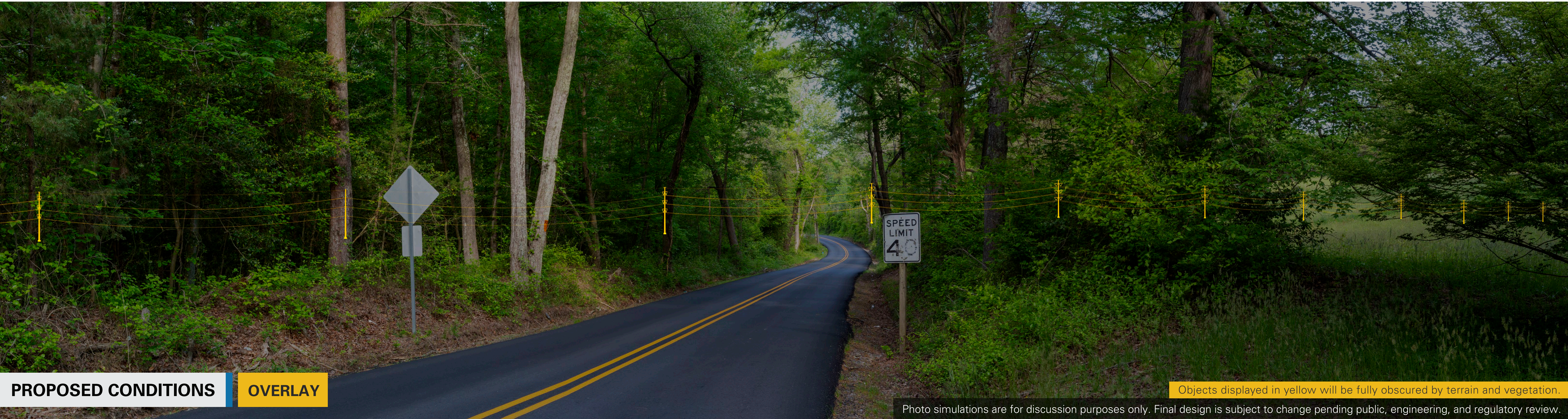
230 kV Electric Transmission Project

Viewpoint 16

Date: 04/29/2024 Time: 2:43 pm
Viewing Direction: West
16 Viewpoint Location Corridor 3



EXISTING CONDITIONS



PROPOSED CONDITIONS

OVERLAY

Objects displayed in yellow will be fully obscured by terrain and vegetation.
Photo simulations are for discussion purposes only. Final design is subject to change pending public, engineering, and regulatory review.