



Viewpoint 08 - Residence at 7715 Marthas Lane - Looking East Northeast - **Proposed View (10 Year Growth)**

For on-screen display:
Scale bar to be 4 inches (101.6 mm) wide
Viewing distance 19.7 inches (50 cm)



Idylwood Substation

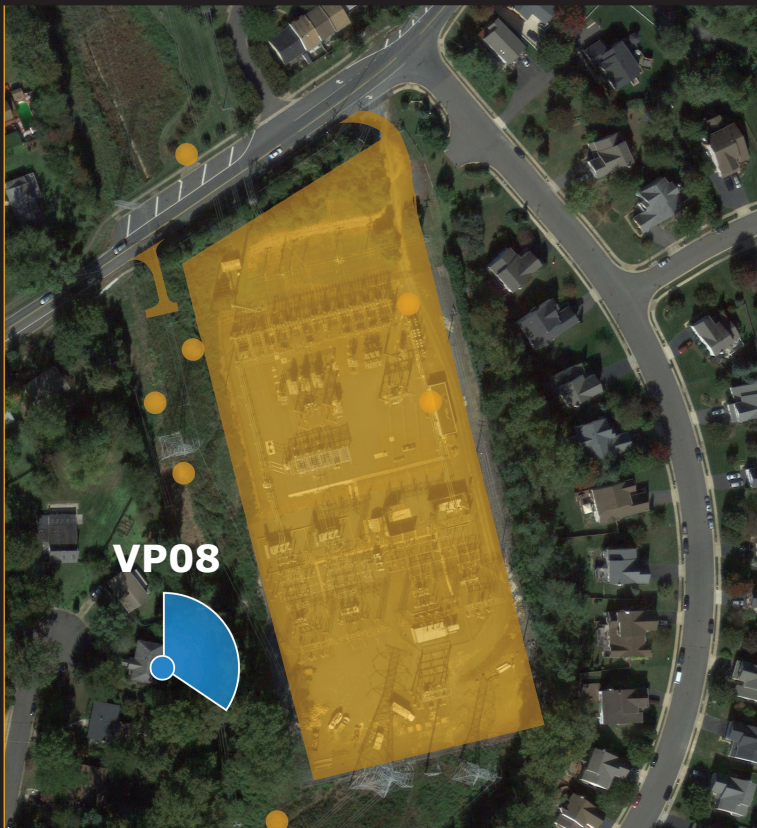
Viewpoint 08

Residence at 7715 Marthas Lane
Falls Church, VA 22043

Looking East Northeast

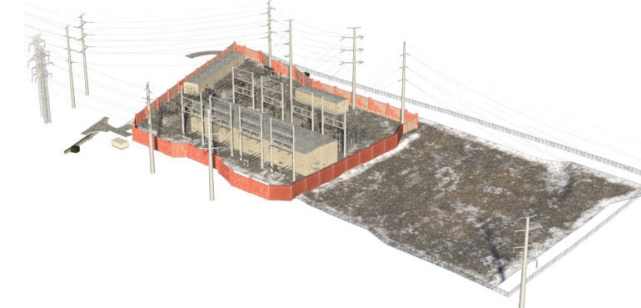
Proposed View (10 Year Growth)

- Viewpoint Location
- Proposed Substation

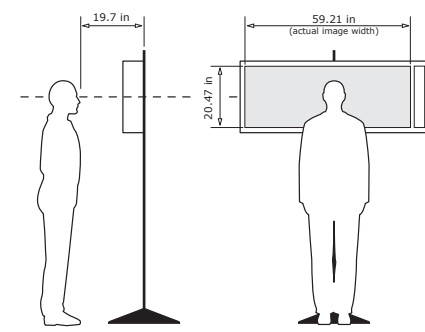


Easting Position (Virginia North Zone, NAD 83): 11849964.3
Northing Position (Virginia North Zone, NAD 83): 7007986.9
Elevation of Viewpoint Position (NAD 88 / ft): 372.3
Height of Camera Above Ground (ft): 5.4
Date of Photography: 30-Jan-2014 at 2:14 pm
Orientation of View: ENE
Horizontal Field of View: 124°
Vertical Field of View: 55°

3d Model



Correct Viewing of TrueView™
Photosimulations



NOTES:

Viewpoint locations have been precision surveyed by

Dewberry
Gainesville, Virginia
13575 Heathcote Boulevard
Suite 130
Gainesville, VA 20155
703.468.2211

Heights are above mean sea level.

No part of this photosimulation shall be altered in any way.
Substation model subject to final engineering.

Photosimulation Created Using
TrueView™ Technology
(Patent No.: US 8,184,906 B2)

Provided by

TRUESCAPE
Stakeholder engagement consultants

www.truescape.com