



Viewpoint 06 - Shreve Road - Entrance to Substation - Looking South - ***Proposed View (10 Year Growth)***

For on-screen display:
Scale bar to be 4 inches (101.6 mm) wide
Viewing distance 19.7 inches (50 cm)



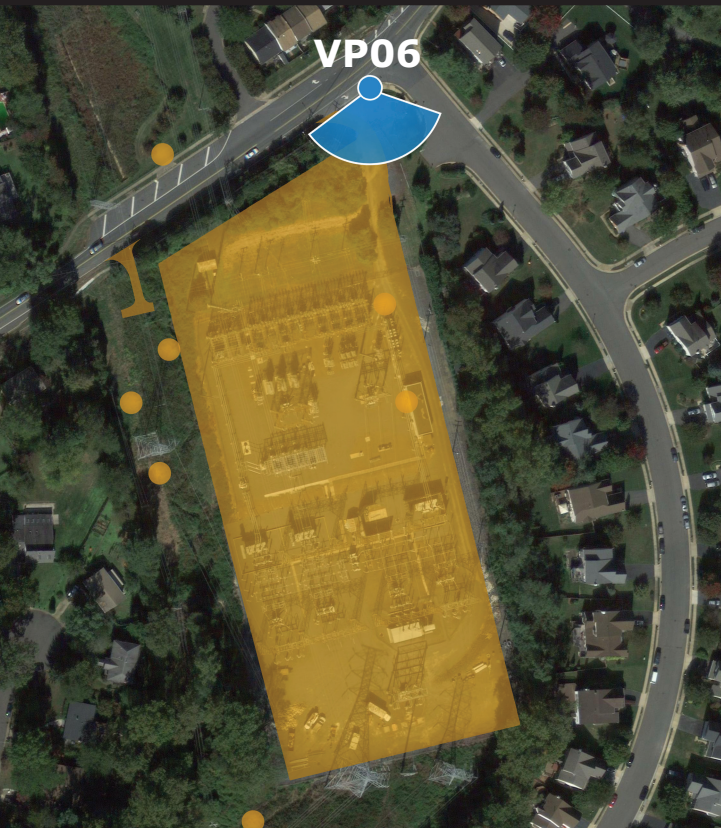
Idylwood Substation

Viewpoint 06

Shreve Road - Entrance to Substation
Falls Church, VA 22043
Looking South

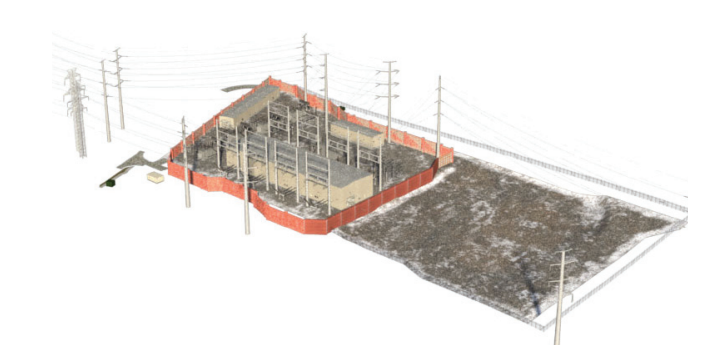
Proposed View (10 Year Growth)

- Viewpoint Location
- Proposed Substation

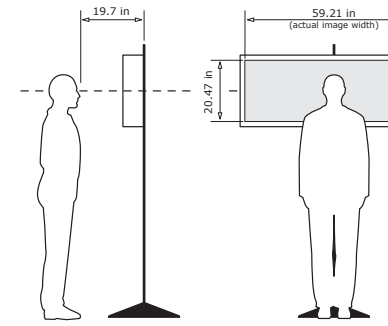


Existing Position (Virginia North Zone,NAD 83):11850229.4
Northing Position (Virginia North Zone,NAD 83):7006678.5
Elevation of Viewpoint Position (NAD 88 / ft): 382.5
Height of Camera Above Ground (ft): 5.4
Date of Photography: 30-Jan-2014 at 1:30 pm
Orientation of View: S
Horizontal Field of View: 124°
Vertical Field of View: 55°

3d Model



Correct Viewing of TrueView™
Photosimulations



NOTES:

Viewpoint locations have been precision surveyed by
Dewberry
Gainesville, Virginia
13575 Heathcote Boulevard
Suite 130
Gainesville, VA 20155
703-468-2211
Heights are above mean sea level.
No part of this photosimulation shall be altered in any way.
Substation model subject to final engineering.

Photosimulation Created Using
TrueView™ Technology
(Patent No.: US 8,184,906 B2)

Provided by

TRUESCAPE
Stakeholder engagement consultants

www.truescape.com