



CHESTERFIELD TO HOPEWELL

PARTIAL REBUILD PROJECT

PHOTO VIEWPOINT MAP

① PHOTO VIEWPOINT LOCATION — TRANSMISSION LINE ▲ EXISTING SUBSTATION



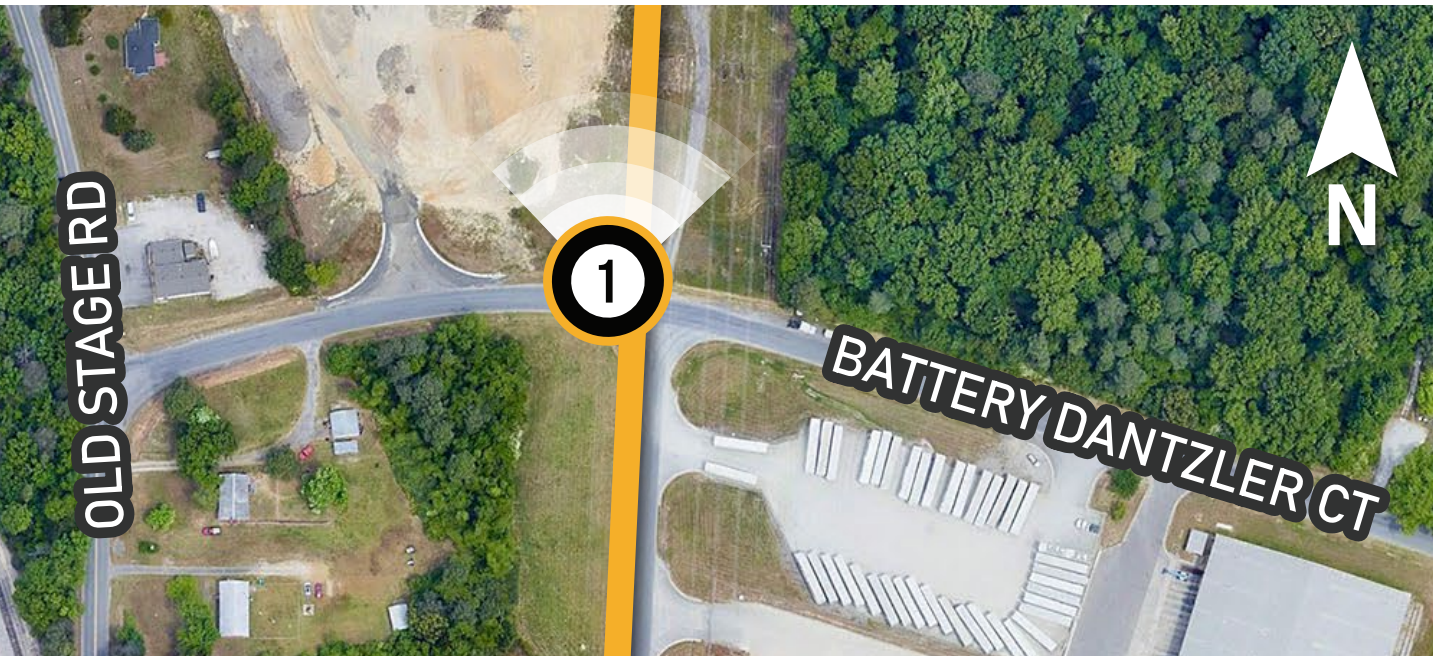
CHESTERFIELD TO HOPEWELL

PARTIAL REBUILD PROJECT

VIEWPOINT 1

DATE: 1/21/2023 TIME: 11:12 AM DIRECTION: NORTH

 PHOTO VIEWPOINT LOCATION  TRANSMISSION LINE



EXISTING CONDITIONS



PROPOSED CONDITIONS



PHOTO SIMULATION IS FOR VISUALIZATION PURPOSES ONLY, FINAL DESIGN IS SUBJECT TO CHANGE PENDING PUBLIC, ENGINEERING, AND REGULATORY REVIEW.

CHESTERFIELD TO HOPEWELL

PARTIAL REBUILD PROJECT

VIEWPOINT 2

DATE: 1/20/2023 TIME: 3:13 PM DIRECTION: SOUTHEAST

- ② PHOTO VIEWPOINT LOCATION
- TRANSMISSION LINE
- ▲ EXISTING SUBSTATION



EXISTING CONDITIONS



PROPOSED CONDITIONS

PHOTO SIMULATION IS FOR VISUALIZATION PURPOSES ONLY, FINAL DESIGN IS SUBJECT TO CHANGE PENDING PUBLIC, ENGINEERING, AND REGULATORY REVIEW.

CHESTERFIELD TO HOPEWELL

PARTIAL REBUILD PROJECT

VIEWPOINT 3

DATE: 1/21/2023 TIME: 8:57 AM DIRECTION: SOUTH

- ③ PHOTO VIEWPOINT LOCATION
- TRANSMISSION LINE
- ▲ EXISTING SUBSTATION



EXISTING CONDITIONS



PROPOSED CONDITIONS



PHOTO SIMULATION IS FOR VISUALIZATION PURPOSES ONLY, FINAL DESIGN IS SUBJECT TO CHANGE PENDING PUBLIC, ENGINEERING, AND REGULATORY REVIEW.

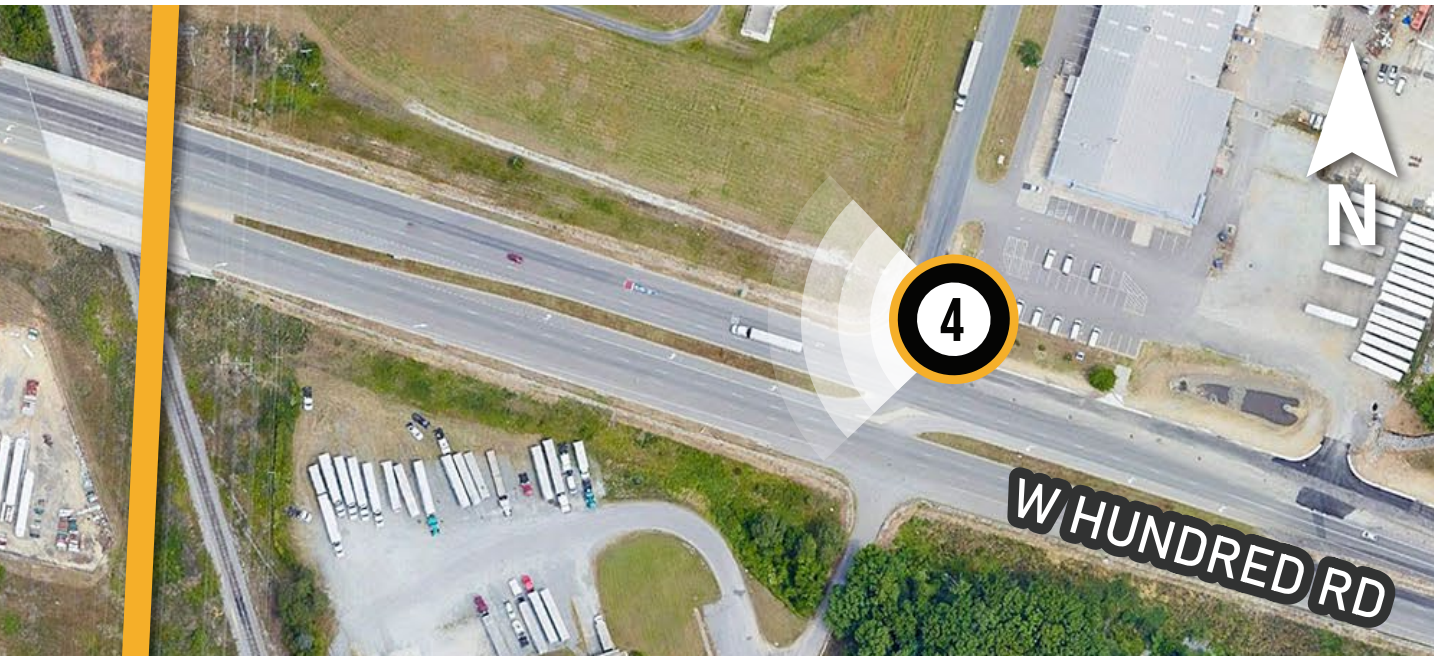
CHESTERFIELD TO HOPEWELL

PARTIAL REBUILD PROJECT

VIEWPOINT 4

DATE: 1/21/2023 TIME: 10:03 AM DIRECTION: WEST

4 PHOTO VIEWPOINT LOCATION — TRANSMISSION LINE



EXISTING CONDITIONS



PROPOSED CONDITIONS

PHOTO SIMULATION IS FOR VISUALIZATION PURPOSES ONLY, FINAL DESIGN IS SUBJECT TO CHANGE PENDING PUBLIC, ENGINEERING, AND REGULATORY REVIEW.